
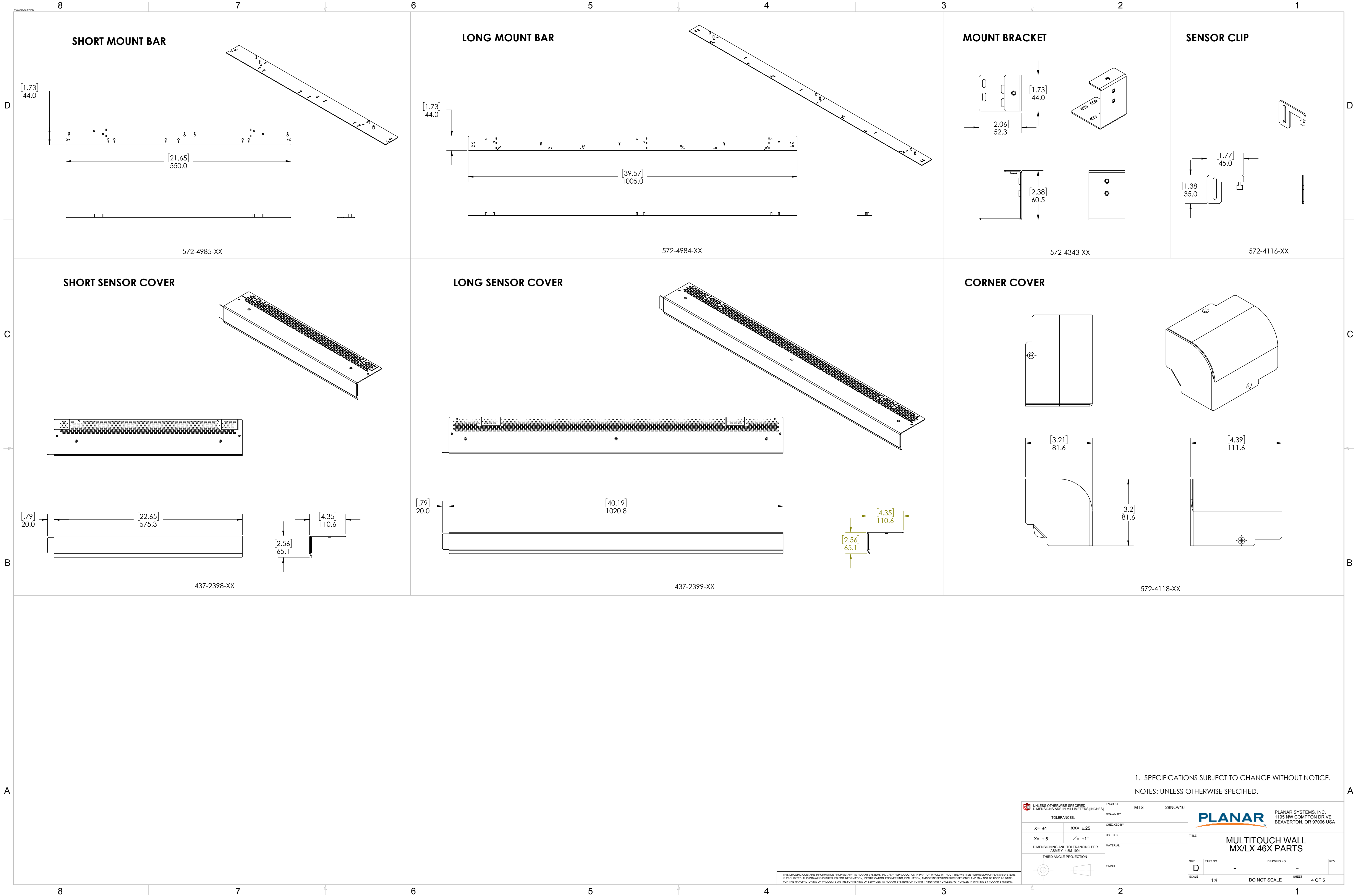


 <b>PLANAR</b>		PLANAR SYSTEMS, INC. 1195 NW COMPTON DRIVE BEAVERTON, OR 97006 USA	
UNLESS OTHERWISE SPECIFIED DIMENSIONS ARE IN MILLIMETERS (INCHES)		ENGR BY	27 Nov 17
TOLERANCES:		DRAWN BY	27 Nov 17
X= ±1	XX= ±.25	CHECKED BY	27 Nov 17
.X= ±.5	∠= ±1°	USED ON	
DIMENSIONING AND TOLERANCING PER ASME Y14.5M-1994		MATERIAL	
THIRD ANGLE PROJECTION		FINISH	
		SIZE	PART NO.
		SCALE	DRAWING NO.
		1:8	-
		DO NOT SCALE	REV
			3 OF 5



1. SPECIFICATIONS SUBJECT TO CHANGE WITHOUT NOTICE.  
NOTES: UNLESS OTHERWISE SPECIFIED.

		PLANAR SYSTEMS, INC. 1195 NW COMPTON DRIVE BEAVERTON, OR 97006 USA	
UNLESS OTHERWISE SPECIFIED DIMENSIONS ARE IN MILLIMETERS (INCHES)		ENGR BY MTS	28NOV16
TOLERANCES:		DRAWN BY	
X= ±1	XX= ±.25	CHECKED BY	
.X= ±.5	∠= ±1°	USED ON	
DIMENSIONING AND TOLERANCING PER ASME Y14.5M-1994		MATERIAL	
THIRD ANGLE PROJECTION		FINISH	
		TITLE MULTITOUCH WALL MX/LX 46X PARTS	
SIZE D	PART NO. -	DRAWING NO. -	REV
SCALE 1:4	DO NOT SCALE	SHEET 4 OF 5	

THIS DRAWING CONTAINS INFORMATION PROPRIETARY TO PLANAR SYSTEMS, INC. ANY REPRODUCTION IN PART OR WHOLE WITHOUT THE WRITTEN PERMISSION OF PLANAR SYSTEMS IS PROHIBITED. THIS DRAWING IS SUPPLIED FOR INFORMATION, IDENTIFICATION, ENGINEERING, EVALUATION, AND/OR INSPECTION PURPOSES ONLY AND MAY NOT BE USED AS BASIS FOR THE MANUFACTURING OF PRODUCTS OR THE FURNISHING OF SERVICES TO PLANAR SYSTEMS OR TO ANY THIRD PARTY UNLESS AUTHORIZED IN WRITING BY PLANAR SYSTEMS.

