



## Leyard HKS II Series

Commercial Design Indoor LED Display



Modular design for easy installation,  
operation and service



Full Front & Rear Maintenance



Innovative 2-in-1 USB-C Connection  
for Signal & Power



Magnetic floating module connection  
for perfect flatness

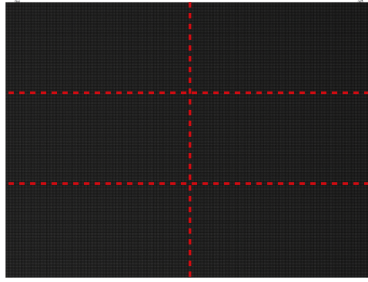


High-strength aluminum alloy  
cabinet, resistant to deformation

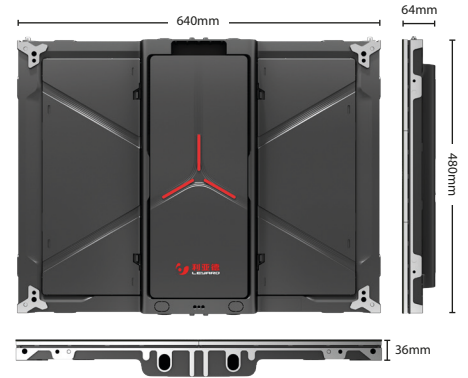
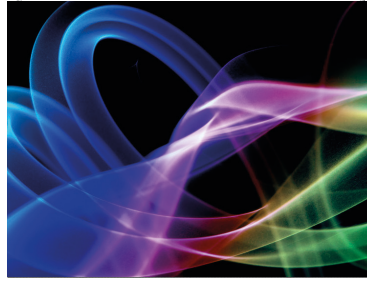
### High-Strength Aluminum Alloy LED Display Cabinet

HKS II was designed to be compatible with the LCH II module (320×160mm) which serves as its corresponding accessory. The new Type-C connector lets power and data in one cable for high speed transmission and more stable. With such a highly integrated design we bring HKS II and LCH II together to simplify the installation easier then ever, which is ideal for extensive applications.



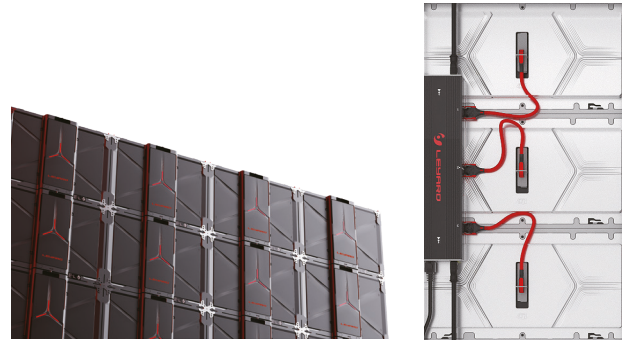
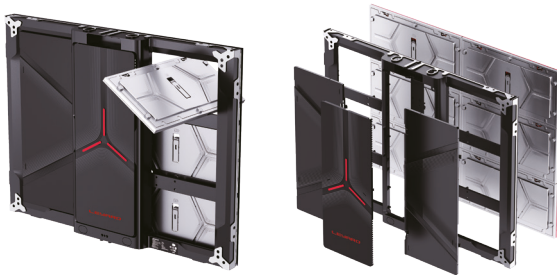


HKS II Cabinet with LCH II Modules  
Composition (2W x 3H)



## Modular Architecture

The concept behind our HKS II series is to offer the modules from the LCH II series a lightweight, yet robust and precisely manufactured platform for the convenient construction of seamless video walls. Cabling is also simple and efficient thanks to the ultra-fast USB-C standard with data and power supply via a single connection.



## Service-friendly Design

The modular design of our HKS II series simplifies the installation and servicing of the displays. The back covers of the cabinets can be removed without the need for tools, modules can be accessed from the front and rear of the cabinet for servicing.

## USB C-Type Connection

A simple USB-C connection is all that is needed to connect the modules, which provides both the transmission of the image data and the power supply for the module. A special locking mechanism guarantees that the plug is firmly attached to the module.



High Refresh Rate

Low Refresh Rate

## Smooth Dynamic Content Display

High refresh rate display ensures smooth video playback and can also avoid problems when filming the video wall.



High Grey Scales

Low Grey Scales

## Brilliant Image Display

Smooth and natural colour display thanks to high contrast ration and 18-bit greyscale processing.

# Specifications

Cabinet Model	HKS II				
Product Model	HKS II + LCH II				
Pixel Pitch	1.25	1.53	1.86	2	2.5
Module Arrangement (WxH)	2x3				
Cabinet Size (mm) (WxHxD)	640 × 480 × 64 ( Including module) / 640 × 480 × 54 ( Not including module)				
Cabinet Area (m²)	0.3072				
Weight (kg/cabinet; kg/m²)	6.5; 21.16				
Cabinet Flatness (mm)	0.15				
White Balance Brightness (nits)	≥550	≥500	≥500	≥500	≥600
Color Temp (k)	3000~38000 Adjustable				
Horizontal Viewing Angle (°)	160				
Vertical Viewing Angle (°)	140				
Deviation of LED Luminance Center	<3%				
Brightness Uniformity	≥97%				
Chromaticity Uniformity	Within ±0.003Cx,Cy				
Contrast Ratio	8000:1				
Peak Power Consumption (W/m²)	490				
Avg Power Consumption(W/m²)	165				
Working Voltage (V)	AC100~240				
Frame Rate (Hz)	50&60				
Greyscale (bit)	14~18				
HDR Supported	HDR10				
Refresh Rate (Hz)	≥4800				
IP Rating (Front /Rear)	IP61 / IP41				
Operation Temp (°C)	-10~40				
Storage Temp (°C)	-20~60				
Operation Humidity Range (RH)	10~80% Non-condensing				
Storage Humidity Range (RH)	10~85% Non-condensing				