

REVISION HISTORY					
ECO	ZONE	REV.	DESCRIPTION	DATE	APPR'D
		D	UPDATED CABINET DESIGN	2/8/2024	JJG
		E	ADD COVER SHEET, TOC, HANG BAR CLAMP OPTION	5/23/2024	JJG

PLANAR®

PLANAR SYSTEMS, INC.
1195 NE COMPTON DRIVE
HILLSBORO, OR 97006 USA

THIS DRAWING CONTAINS INFORMATION PROPRIETARY TO PLANAR SYSTEMS, INC.. ANY REPRODUCTION IN PART OR WHOLE WITHOUT THE WRITTEN PERMISSION OF PLANAR SYSTEMS IS PROHIBITED. THIS DRAWING IS SUPPLIED FOR INFORMATION, IDENTIFICATION, ENGINEERING, EVALUATION, AND/OR INSPECTION PURPOSES ONLY AND MAY NOT BE USED AS BASIS FOR THE MANUFACTURING OF PRODUCTS OR THE FURNISHING OF SERVICES TO PLANAR SYSTEMS OR TO ANY THIRD PARTY UNLESS AUTHORIZED IN WRITING BY PLANAR SYSTEMS.

PRODUCT

Planar® Venue™ Pro

PART NO.

-

SHEET TITLE

COVER SHEET

UNLESS OTHERWISE SPECIFIED DIMENSIONS ARE IN MILLIMETERS [INCHES].

DRAWN BY

JJG

DRAWN DATE

8 FEB 24

SHEET

1 OF 14

SHEET SIZE

B

REVISION

E

1. SPECIFICATIONS SUBJECT TO CHANGE WITHOUT NOTICE

NOTES: UNLESS OTHERWISE SPECIFIED.

4321

D

C

B

A

1. SPECIFICATIONS SUBJECT TO CHANGE WITHOUT NOTICE

NOTES: UNLESS OTHERWISE SPECIFIED.

Sheet List Table	
Sheet Number	Sheet Title
1	COVER PAGE
2	KEY & INDEX
3	VPI CABINET
4	VPI MODULES
5	VPI HANGING ARRAY
6	VPI CURVED HANGING
7	VPI FLOOR STAND ARRAY
8	VPI CURVED FLOOR STAND
9	VPI FLOOR STAND
10	VPI FLOOR STAND COMPONENTS
11	VPI FLOOR STAND COMP CONT.
12	VPI HANGING BRACKET
13	VPI LINK BRACKETS

PLANAR®

PLANAR SYSTEMS, INC.
1195 NE COMPTON DRIVE
HILLSBORO, OR 97006 USA

THIS DRAWING CONTAINS INFORMATION PROPRIETARY TO PLANAR SYSTEMS, INC.. ANY REPRODUCTION IN PART OR WHOLE WITHOUT THE WRITTEN PERMISSION OF PLANAR SYSTEMS IS PROHIBITED. THIS DRAWING IS SUPPLIED FOR INFORMATION, IDENTIFICATION, ENGINEERING, EVALUATION, AND/OR INSPECTION PURPOSES ONLY AND MAY NOT BE USED AS BASIS FOR THE MANUFACTURING OF PRODUCTS OR THE FURNISHING OF SERVICES TO PLANAR SYSTEMS OR TO ANY THIRD PARTY UNLESS AUTHORIZED IN WRITING BY PLANAR SYSTEMS.

PRODUCT

Planar® Venue™ Pro

SHEET TITLE

KEY & INDEX

UNLESS OTHERWISE SPECIFIED DIMENSIONS ARE IN MILLIMETERS [INCHES].

-

DRAWN BY

JJG

DRAWN DATE

8 FEB 24

SHEET

2 OF 14

SHEET SIZE

B

REVISION

E

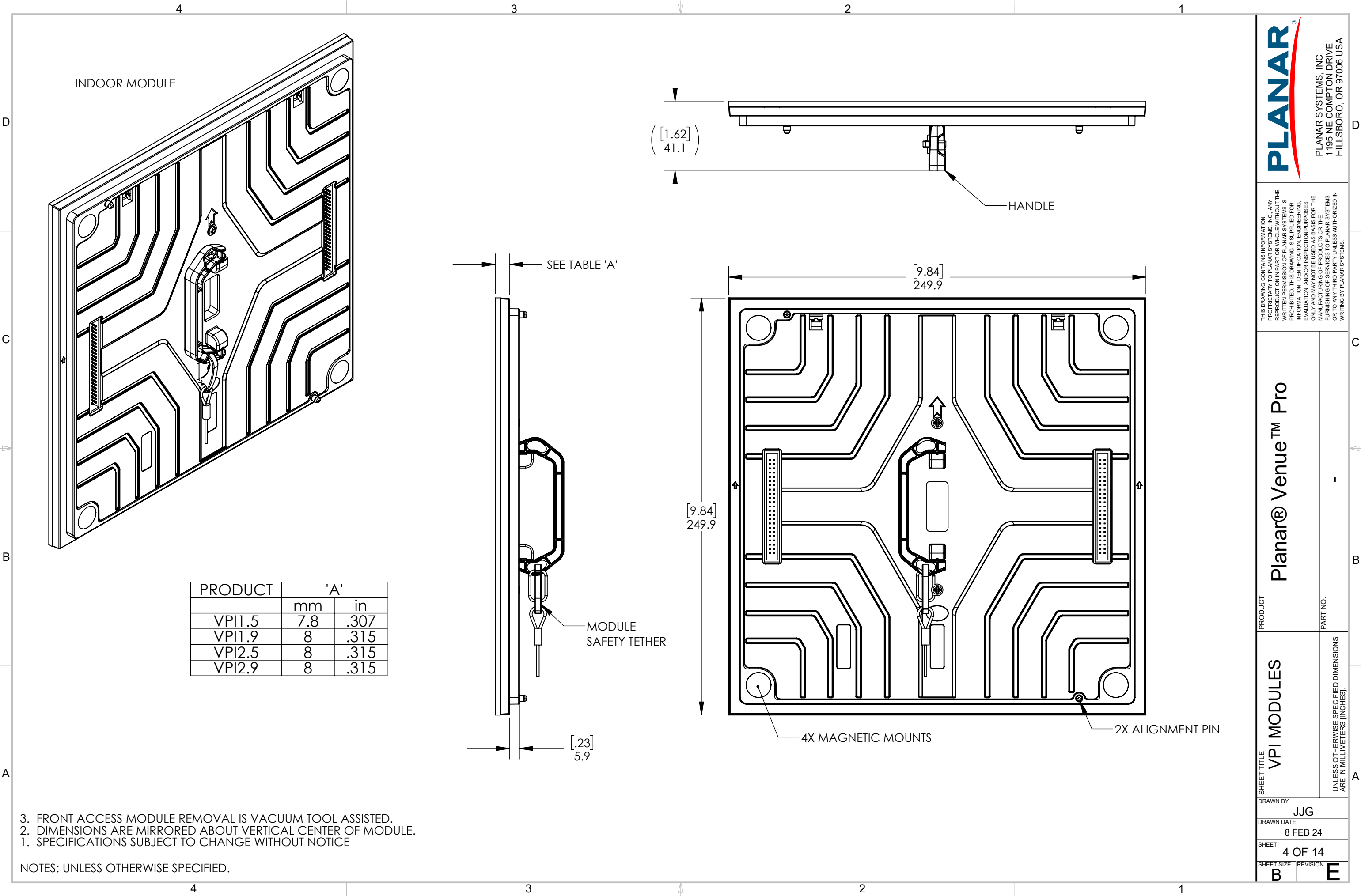
4321

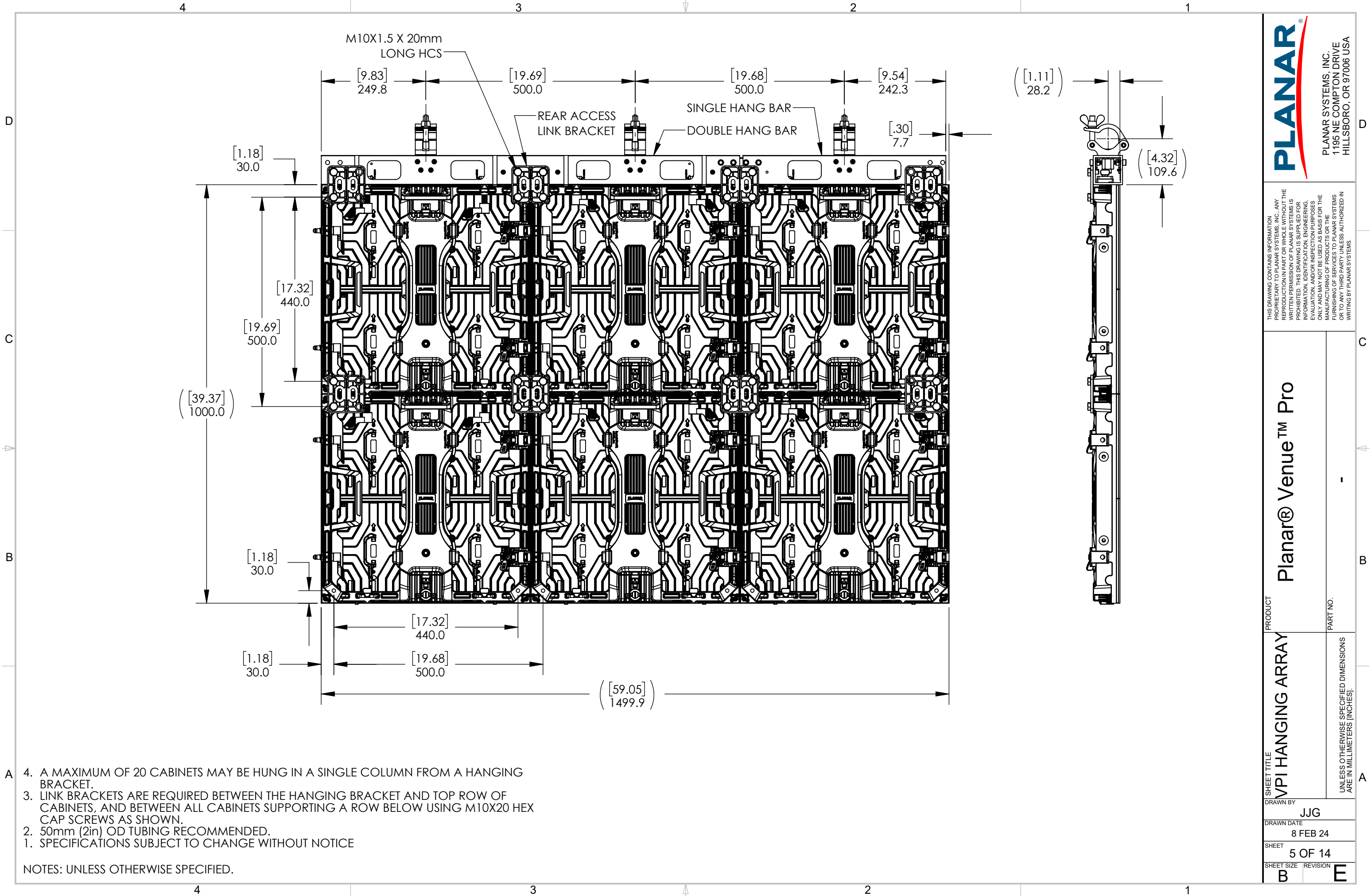
D

C

B

A





PLANAR®

PLANAR SYSTEMS, INC.
1195 NE COMPTON DRIVE
HILLSBORO, OR 97006 USA

THIS DRAWING CONTAINS INFORMATION PROPRIETARY TO PLANAR SYSTEMS, INC. ANY REPRODUCTION IN PART OR WHOLE WITHOUT THE WRITTEN PERMISSION OF PLANAR SYSTEMS IS PROHIBITED. THIS DRAWING IS SUPPLIED FOR INFORMATION, IDENTIFICATION, ENGINEERING, EVALUATION, AND/OR INSPECTION PURPOSES ONLY AND MAY NOT BE USED AS BASIS FOR THE MANUFACTURING OF PRODUCTS OR THE FURNISHING OF SERVICES TO PLANAR SYSTEMS OR TO ANY THIRD PARTY UNLESS AUTHORIZED IN WRITING BY PLANAR SYSTEMS.

PRODUCT
Planar® Venue™ Pro

PART NO.

-

SHEET TITLE
VPI HANGING ARRAY

UNLESS OTHERWISE SPECIFIED DIMENSIONS ARE IN MILLIMETERS [INCHES].

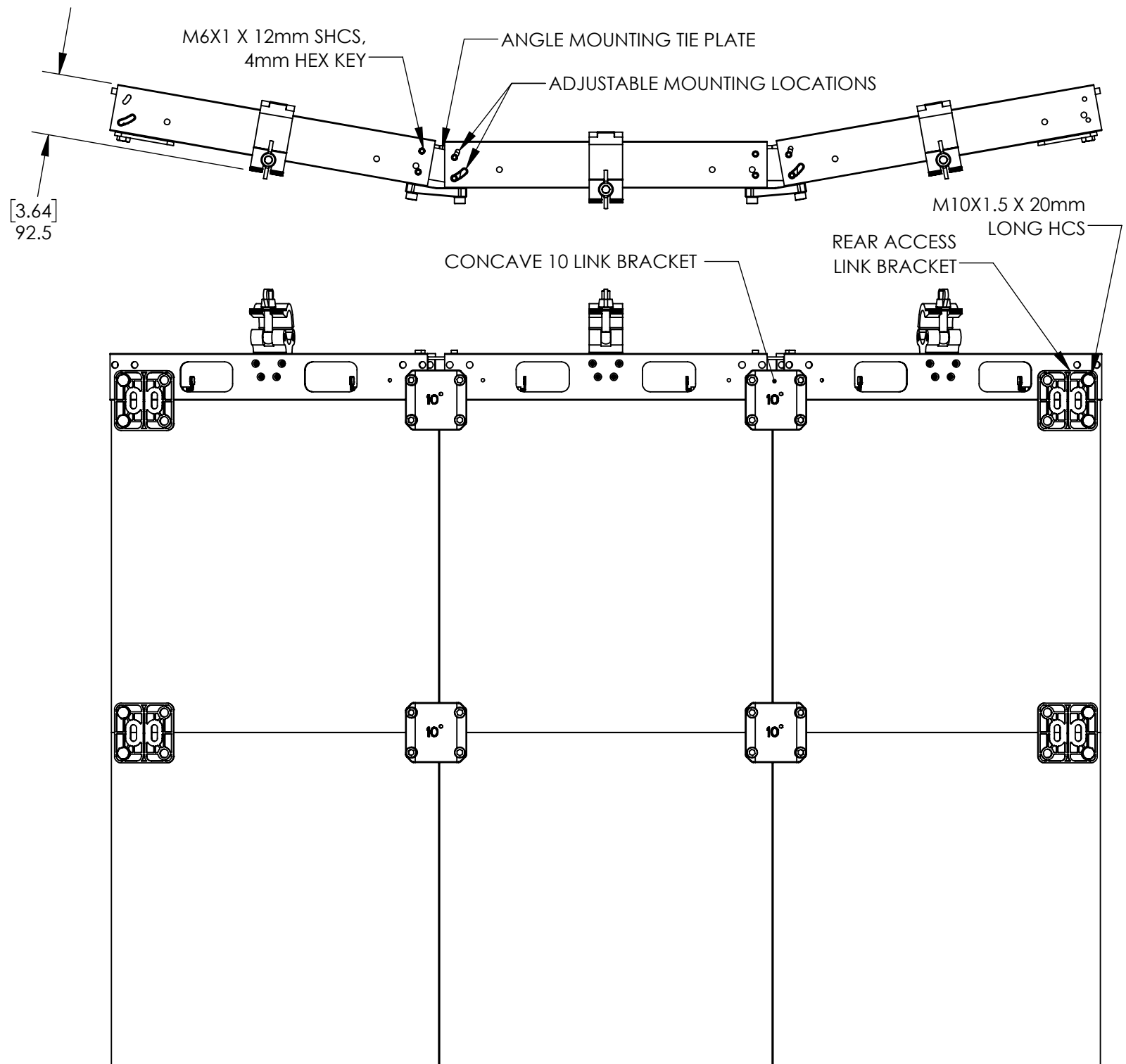
DRAWN BY
JJG

DRAWN DATE
8 FEB 24

SHEET
5 OF 14

SHEET SIZE
B

REVISION
E



REAR VIEW, CABINET DETAIL NOT SHOWN FOR CLARITY

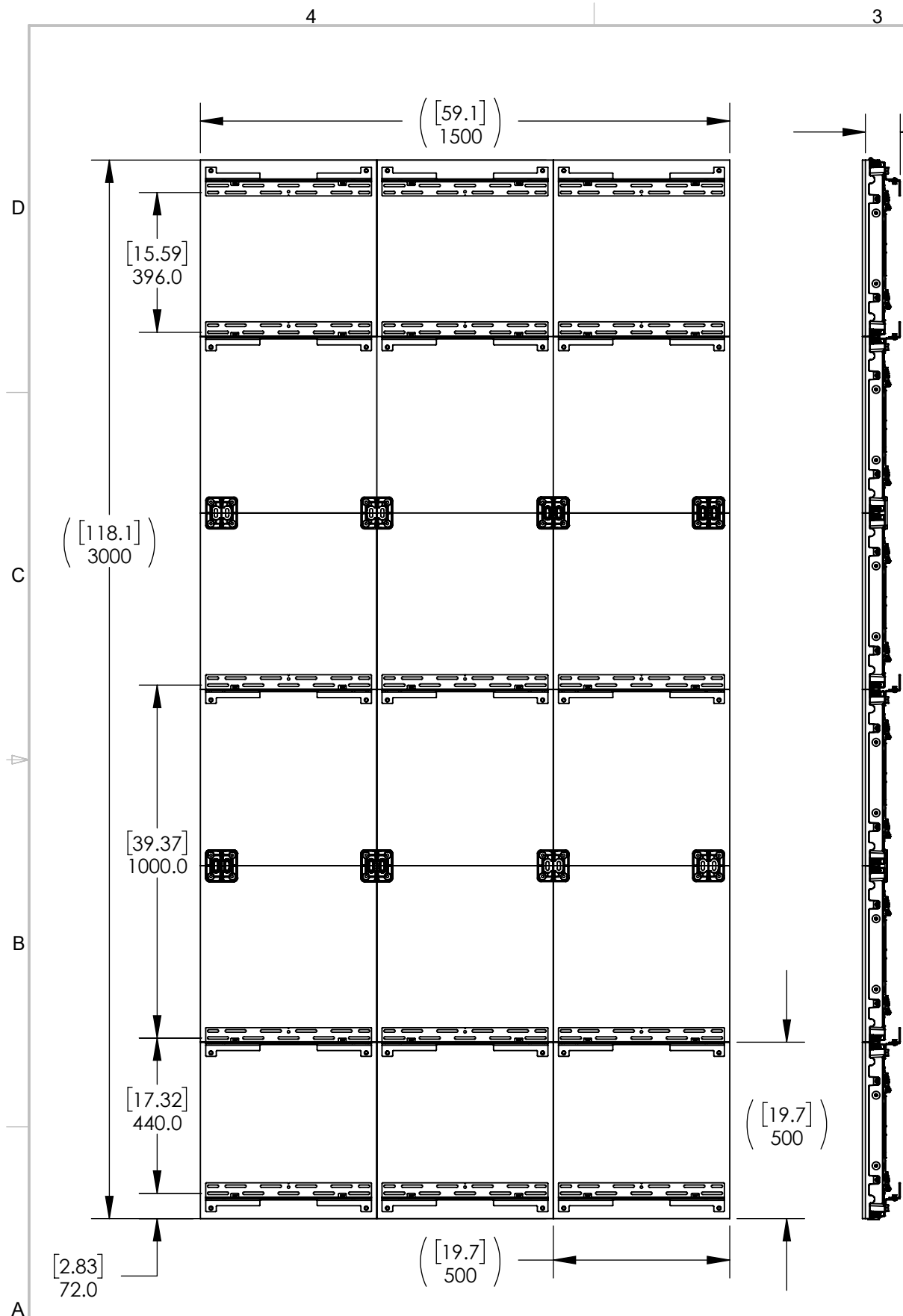
6. A MAXIMUM OF 20 CABINETS MAY BE HUNG IN A SINGLE COLUMN FROM A HANGING BRACKET.
5. REAR ACCESS IS REQUIRED FOR ALL HANGING BRACKET INSTALLATIONS.
4. LINK BRACKETS ARE REQUIRED BETWEEN THE HANGING BRACKET AND TOP ROW OF CABINETS, AND BETWEEN ALL CABINETS SUPPORTING A ROW BELOW.
3. ANGLE MOUNTING OPTIONS INCLUDE: CONVEX AND CONCAVE IN -10, -7.5, -5, -2.5, 2.5, 5, 7.5, AND 10 DEGREE ANGLES. CONCAVE 10 DEGREE MOUNTING OPTION IS SHOWN.
2. 50mm (2in) OD TUBING RECOMMENDED.
1. SPECIFICATIONS SUBJECT TO CHANGE WITHOUT NOTICE

NOTES: UNLESS OTHERWISE SPECIFIED.

THIS DRAWING CONTAINS INFORMATION PROPRIETARY TO PLANAR SYSTEMS, INC. ANY REPRODUCTION IN PART OR WHOLE WITHOUT THE WRITTEN PERMISSION OF PLANAR SYSTEMS IS PROHIBITED. THIS DRAWING IS SUPPLIED FOR INFORMATION, IDENTIFICATION, ENGINEERING, EVALUATION, AND/OR INSPECTION PURPOSES ONLY AND MAY NOT BE USED AS BASIS FOR THE MANUFACTURING OF PRODUCTS OR THE FURNISHING OF SERVICES TO PLANAR SYSTEMS OR TO ANY THIRD PARTY UNLESS AUTHORIZED IN WRITING BY PLANAR SYSTEMS.

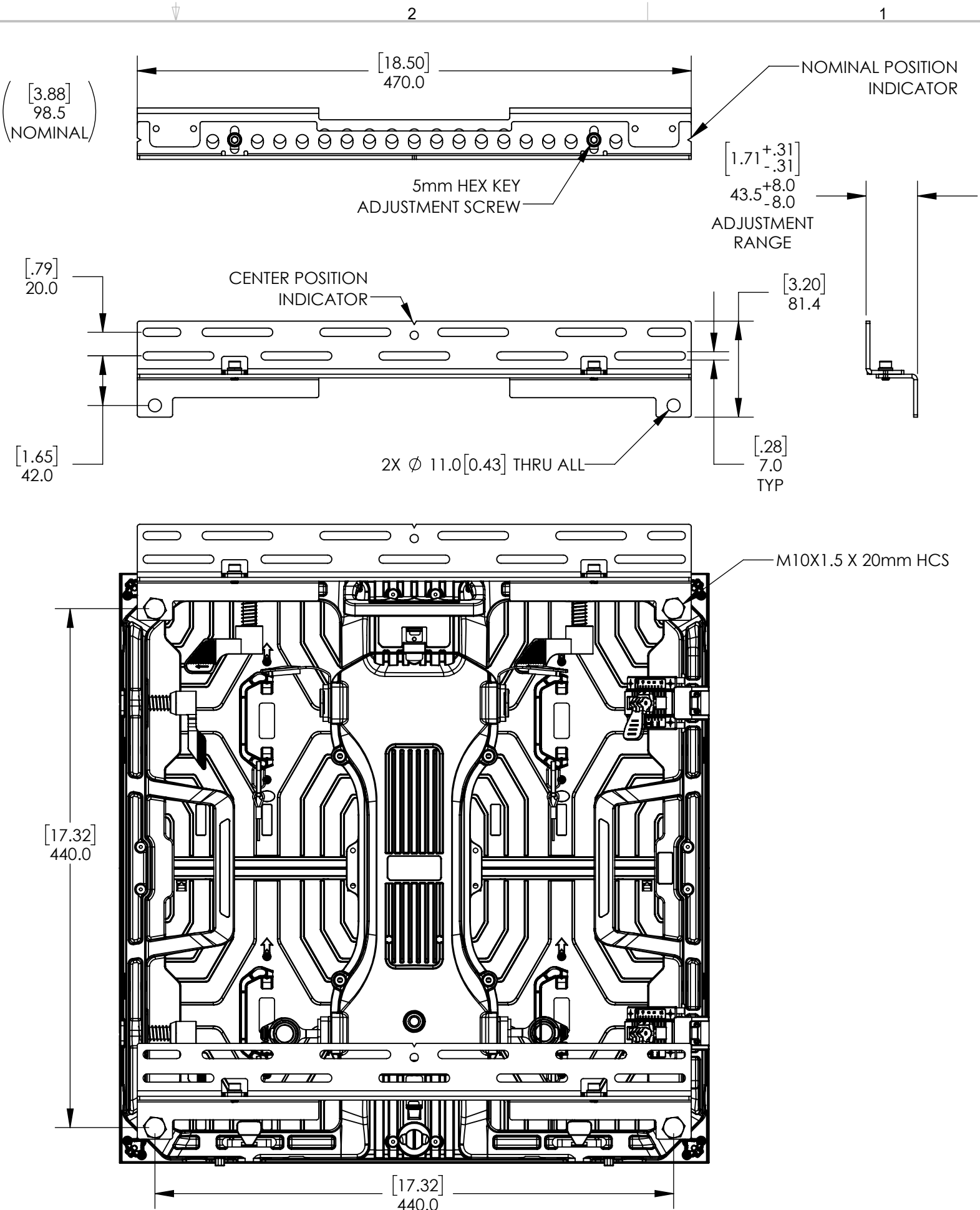
PRODUCT	Planar® Venue™ Pro	
	PART NO.	-

SHEET TITLE	VPI CURVED HANGING	
	UNLESS OTHERWISE SPECIFIED DIMENSIONS ARE IN MILLIMETERS [INCHES]:	
DRAWN BY	JJG	
	DRAWN DATE	
SHEET	6 OF 14	
	SHEET SIZE	REVISION
B		E



5. LINK BRACKETS REQUIRED ON ROWS WITHOUT WALL MOUNTING BRACKET.
4. VARIANCE IN STRUCTURE FLATNESS MAY REQUIRE SHIMS FOR MOUNTING POSITIONS.
3. TOP BRACKET IS ROTATED 180 DEGREES TO CONCEAL MOUNT BEHIND CABINET.
2. REMOVAL OF MODULES MAY BE REQUIRED FOR ATTACHMENT OF MOUNTS TO STRUCTURE.
1. SPECIFICATIONS SUBJECT TO CHANGE WITHOUT NOTICE

NOTES: UNLESS OTHERWISE SPECIFIED.

The logo for Planar Systems, Inc. features the word "PLANAR" in a large, bold, blue, sans-serif font. A red swoosh underline starts under the "P" and extends to the right, ending under the "R". To the right of the swoosh, the text "PLANAR SYSTEMS, INC." is written in a smaller, blue, sans-serif font. Below this, the address "1195 NE COMPTON DRIVE" and "HILLSBORO, OR 97006 USA" is printed in a small, blue, sans-serif font.

PLANAR[®]

PLANAR SYSTEMS, INC.
1195 NE COMPTON DRIVE
HILLSBORO, OR 97006 USA

THIS DRAWING CONTAINS INFORMATION PROPRIETARY TO PLANAR SYSTEMS, INC. ANY REPRODUCTION IN PART OR WHOLE WITHOUT THE WRITTEN PERMISSION OF PLANAR SYSTEMS IS PROHIBITED. THIS DRAWING IS SUPPLIED FOR INFORMATION, IDENTIFICATION, ENGINEERING, EVALUATION, AND/OR INSPECTION PURPOSES ONLY AND MAY NOT BE USED AS BASIS FOR THE MANUFACTURING OF PRODUCTS OR THE FURNISHING OF SERVICES TO PLANAR SYSTEMS OR TO ANY THIRD PARTY UNLESS AUTHORIZED IN WRITING BY PLANAR SYSTEMS.

Planar® Venue™ Pro

PRODUCT

LE VPI WALL MOUNTING

PART NO.

UNLESS OTHERWISE SPECIFIED DIMENSIONS
ARE IN MILLIMETERS (INCHES)

69	DRAWN BY
----	----------

DRAWN DATE
8 FEB 24

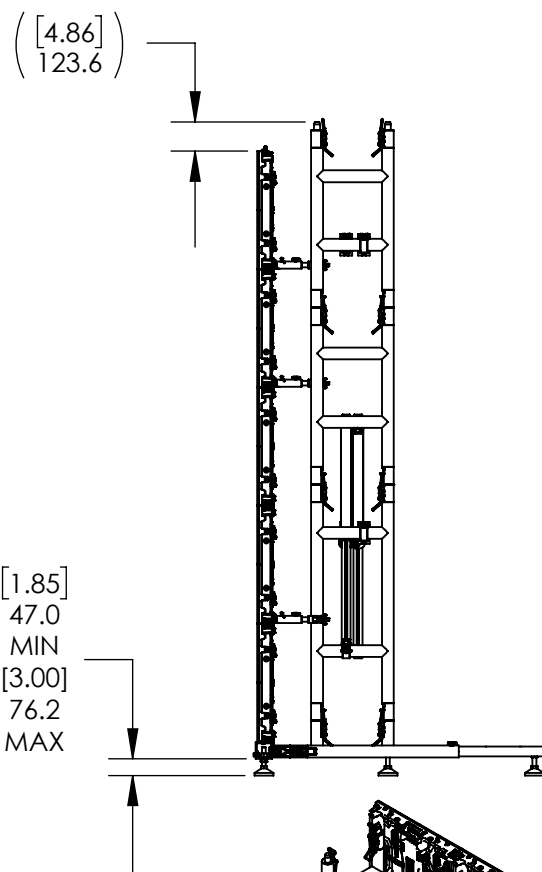
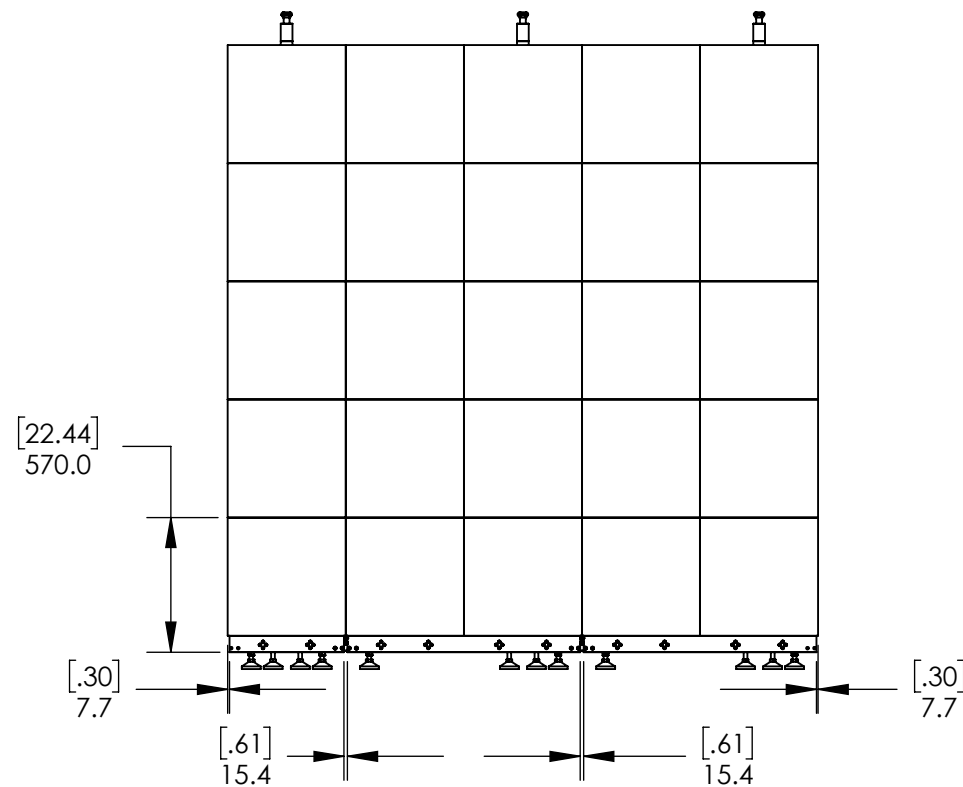
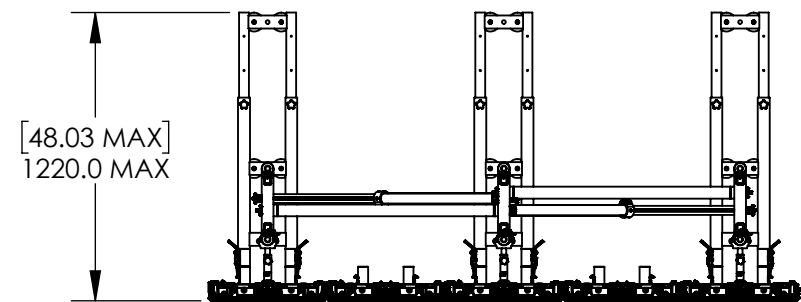
SHEET 7 OF 14

SHEET SIZE	REVISION
------------	----------

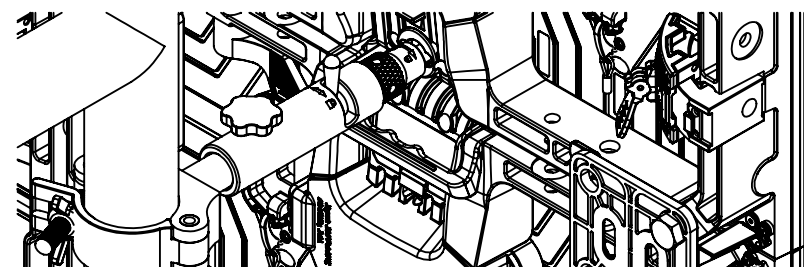
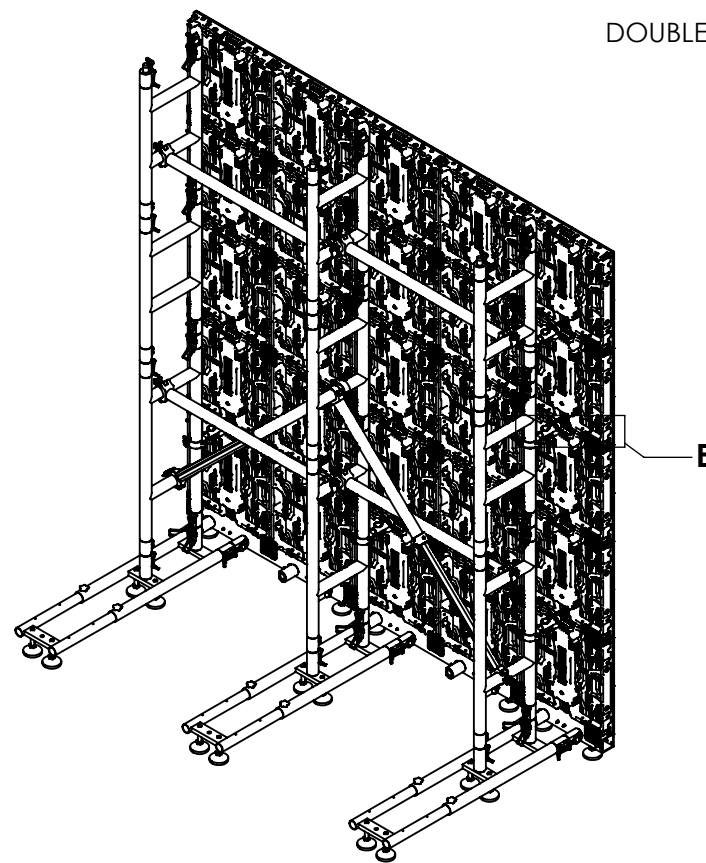
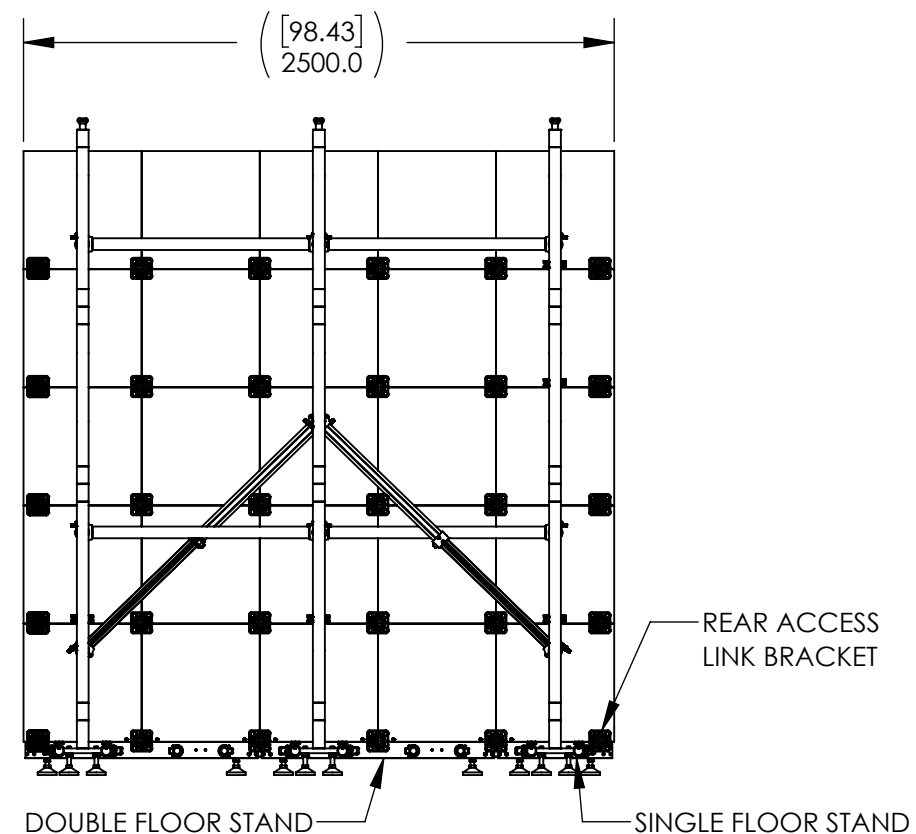
ONE

ION

D
C
B
A



REAR VIEW, CABINET DETAIL NOT SHOWN FOR CLARITY



DETAIL E
SCALE 1 : 4
TIE BACK ARM ORIENTATION

1. SPECIFICATIONS SUBJECT TO CHANGE WITHOUT NOTICE
2. LINK BRACKETS ARE REQUIRED BETWEEN THE FLOOR STAND AND BOTTOM ROW OF CABINETS, AND BETWEEN ALL CABINETS SUPPORTING A ROW ABOVE.
3. A MAXIMUM OF 10 CABINETS MAY BE STACKED IN A SINGLE COLUMN ON A FLOOR STAND.
4. RIGGING OR PROPER ANCHORING IS REQUIRED FOR VIDEO WALLS THAT ARE GREATER THAN 2m [6ft] TALL. RIGGING IS REQUIRED FOR EACH ADDITIONAL 2m [6ft] OF STACKED CABINETS IN A SINGLE COLUMN.

NOTES: UNLESS OTHERWISE SPECIFIED.

THIS DRAWING CONTAINS INFORMATION PROPRIETARY TO PLANAR SYSTEMS, INC. ANY REPRODUCTION IN PART OR WHOLE WITHOUT THE WRITTEN PERMISSION OF PLANAR SYSTEMS IS PROHIBITED. THIS DRAWING IS SUPPLIED FOR INFORMATION, IDENTIFICATION, ENGINEERING, EVALUATION, AND/OR INSPECTION PURPOSES ONLY AND MAY NOT BE USED AS BASIS FOR THE MANUFACTURING OF PRODUCTS OR THE FURNISHING OF SERVICES TO PLANAR SYSTEMS OR TO ANY THIRD PARTY UNLESS AUTHORIZED IN WRITING BY PLANAR SYSTEMS.

Planar® Venue™ Pro

PRODUCT

SHEET TITLE
VPI FLOOR STAND
ARRAY

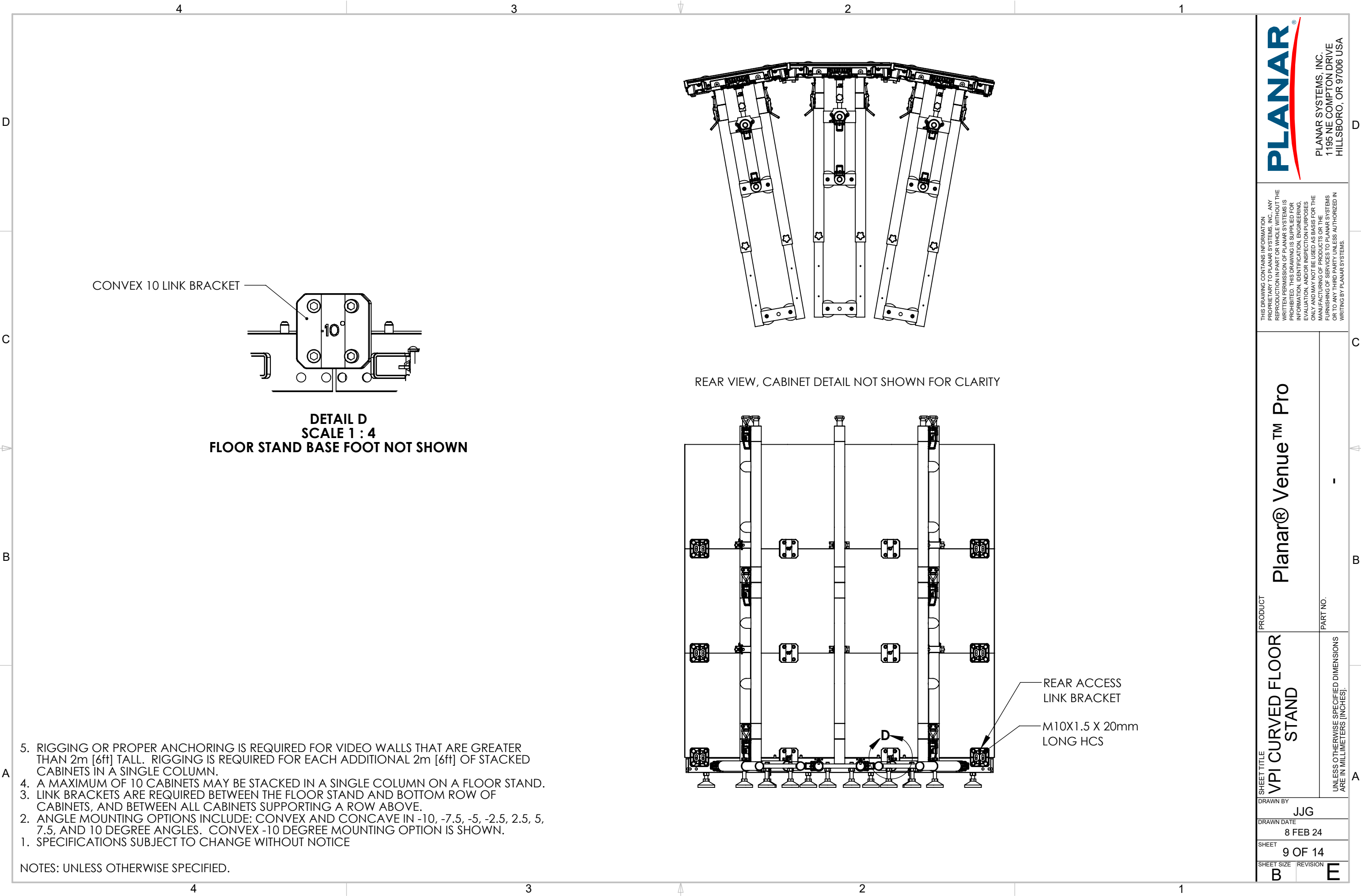
DRAWN BY
JYG
DRAWN DATE
8 FEB 24
SHEET
8 OF 14
SHEET SIZE
B

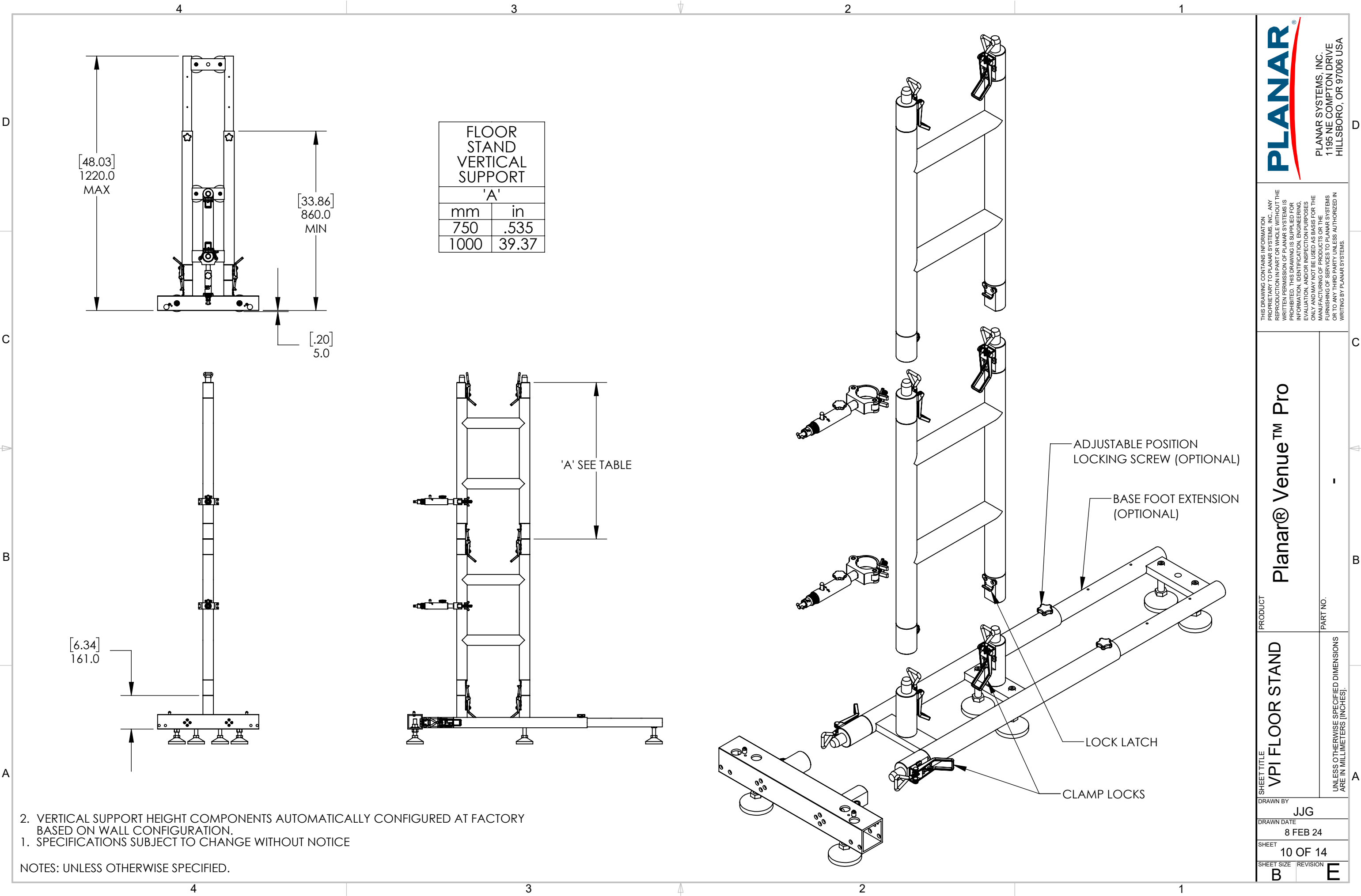
PART NO.

UNLESS OTHERWISE SPECIFIED DIMENSIONS ARE IN MILLIMETERS [INCHES].

REVISION
E

D
C
B
A





PLANAR®

PLANAR SYSTEMS, INC.
1195 NE COMPTON DRIVE
HILLSBORO, OR 97006 USA

THIS DRAWING CONTAINS INFORMATION PROPRIETARY TO PLANAR SYSTEMS, INC. ANY REPRODUCTION IN PART OR WHOLE WITHOUT THE WRITTEN PERMISSION OF PLANAR SYSTEMS IS PROHIBITED. THIS DRAWING IS SUPPLIED FOR INFORMATION, IDENTIFICATION, ENGINEERING, EVALUATION, AND/OR INSPECTION PURPOSES ONLY AND MAY NOT BE USED AS BASIS FOR THE MANUFACTURING OF PRODUCTS OR THE FURNISHING OF SERVICES TO PLANAR SYSTEMS OR TO ANY THIRD PARTY UNLESS AUTHORIZED IN WRITING BY PLANAR SYSTEMS.

Planar® Venue™ Pro

PRODUCT

PART NO.

-

SHEET TITLE
VPI FLOOR STAND

UNLESS OTHERWISE SPECIFIED DIMENSIONS ARE IN MILLIMETERS [INCHES].

DRAWN BY
JJG

DRAWN DATE
8 FEB 24

SHEET
10 OF 14

SHEET SIZE
B

REVISION
E

1



1



1



PLANAR SYSTEMS, INC.
1195 NE COMPTON DRIVE
HILLSBORO, OR 97006 USA

THIS DRAWING CONTAINS INFORMATION PROPRIETARY TO PLANK SYSTEMS, INC. ANY REPRODUCTION IN PART OR WHOLE WITHOUT THE WRITTEN PERMISSION OF PLANK SYSTEMS IS PROHIBITED. THIS DRAWING IS SUPPLIED FOR INFORMATION, IDENTIFICATION, ENGINEERING, EVALUATION, AND/OR INSPECTION PURPOSES ONLY AND MAY NOT BE USED AS BASIS FOR THE MANUFACTURING OF PRODUCTS OR THE FURNISHING OF SERVICES TO PLANK SYSTEMS OR TO ANY THIRD PARTY, UNLESS AUTHORIZED IN WRITING BY PLANK SYSTEMS.

Planar® Venue™ Pro

PRODUCT

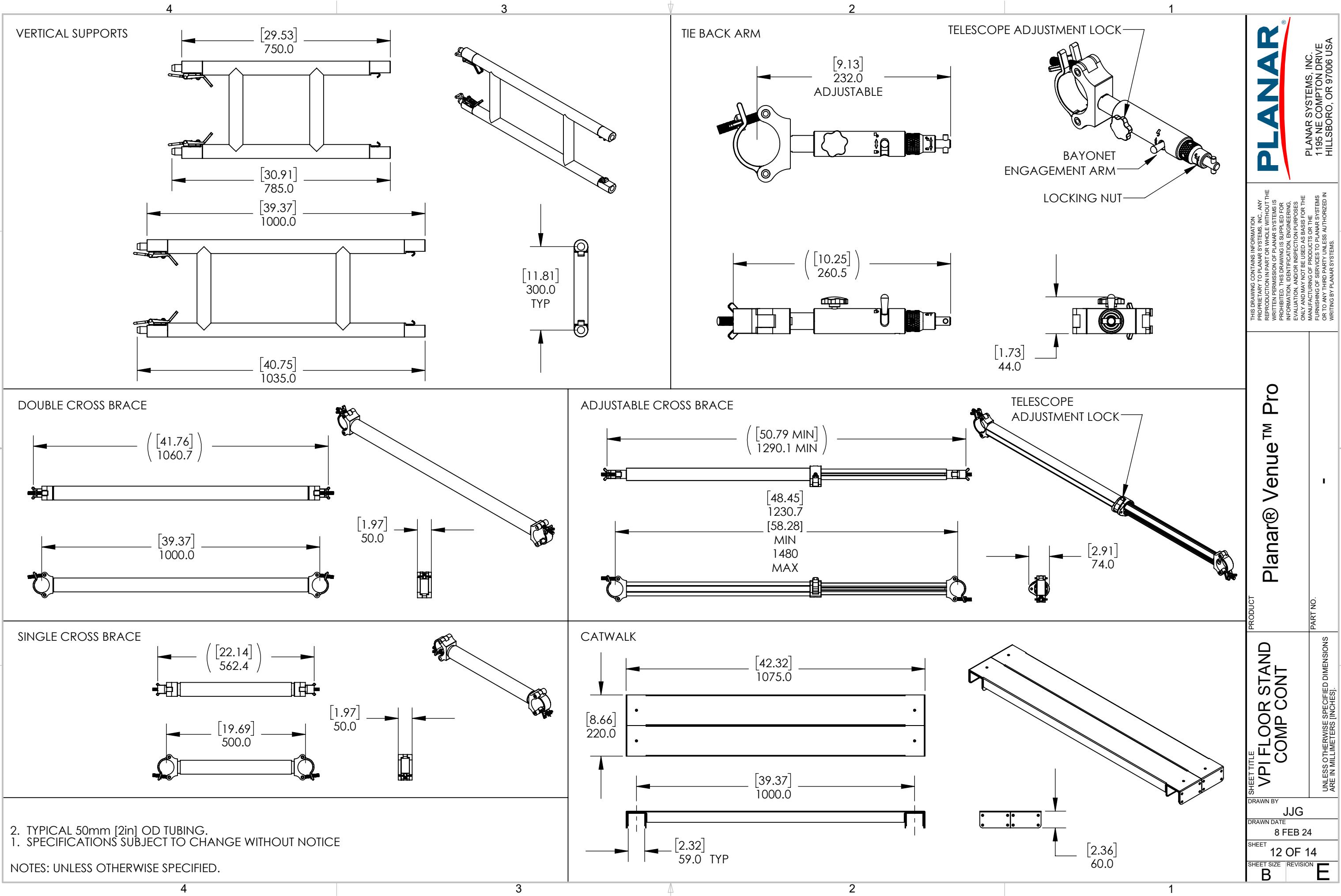
Abstract

ETITLE MPI FLOOR STAND COMPONENTS

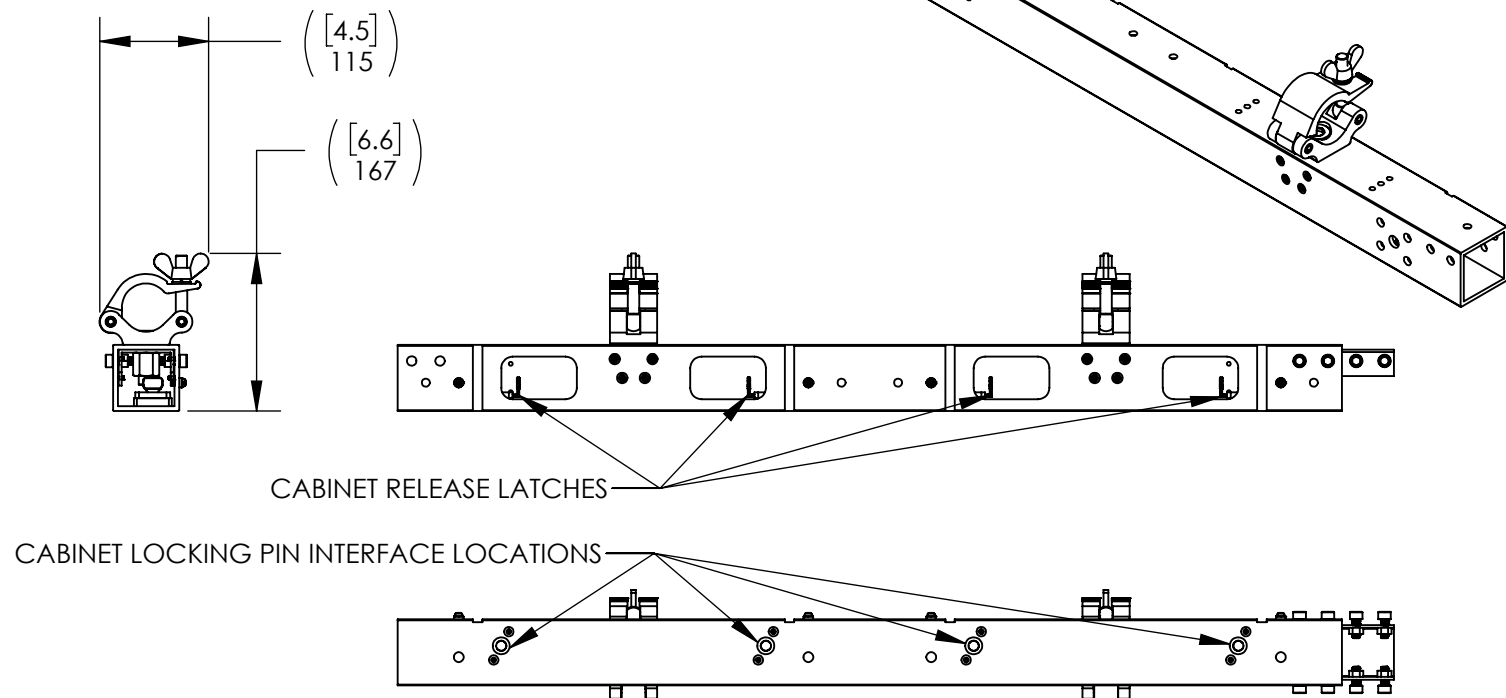
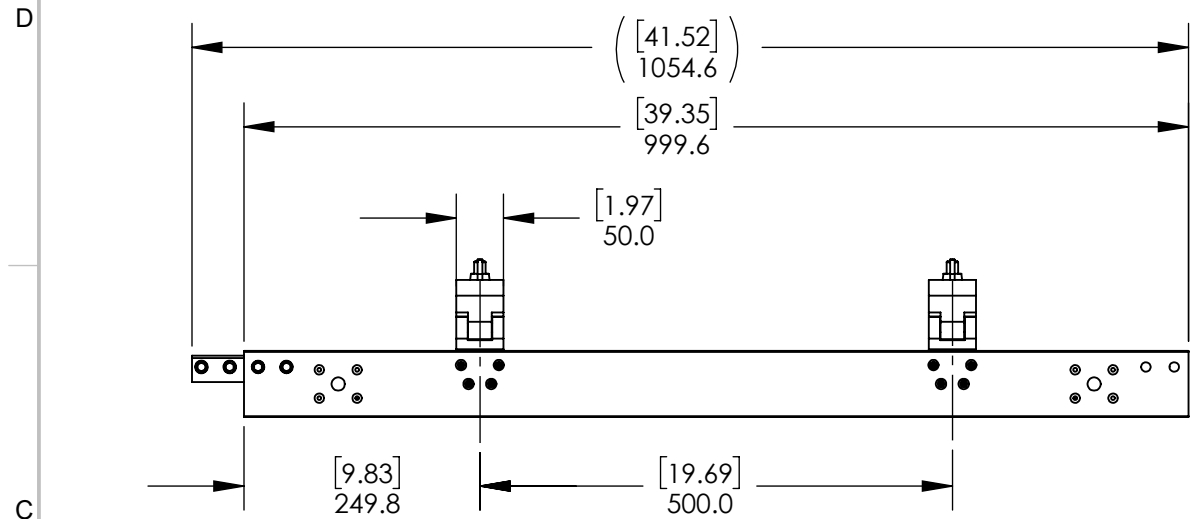
ARE IN MILLIMETERS [INCHES].

DRAWN BY		JJG
DRAWN DATE		8 FEB 24
SHEET		11 OF 14
SHEET SIZE	REVISION	
P		

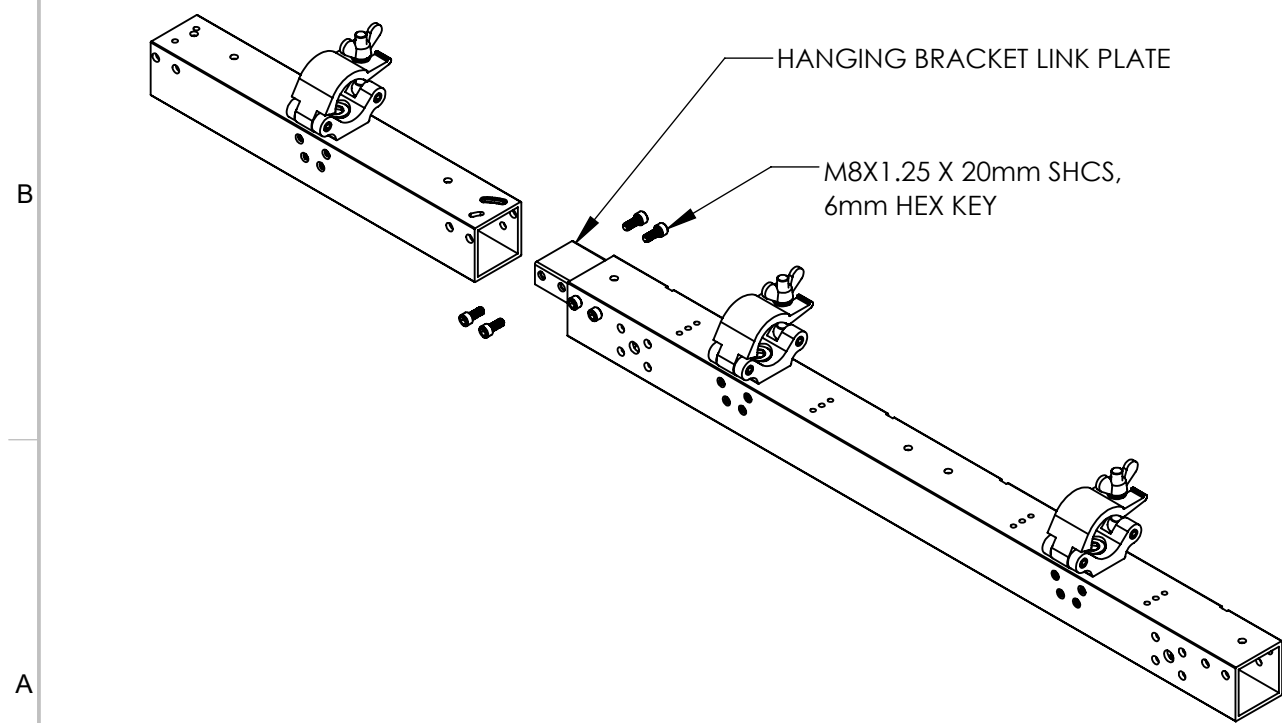
HEET SIZE	REVISION
D	F



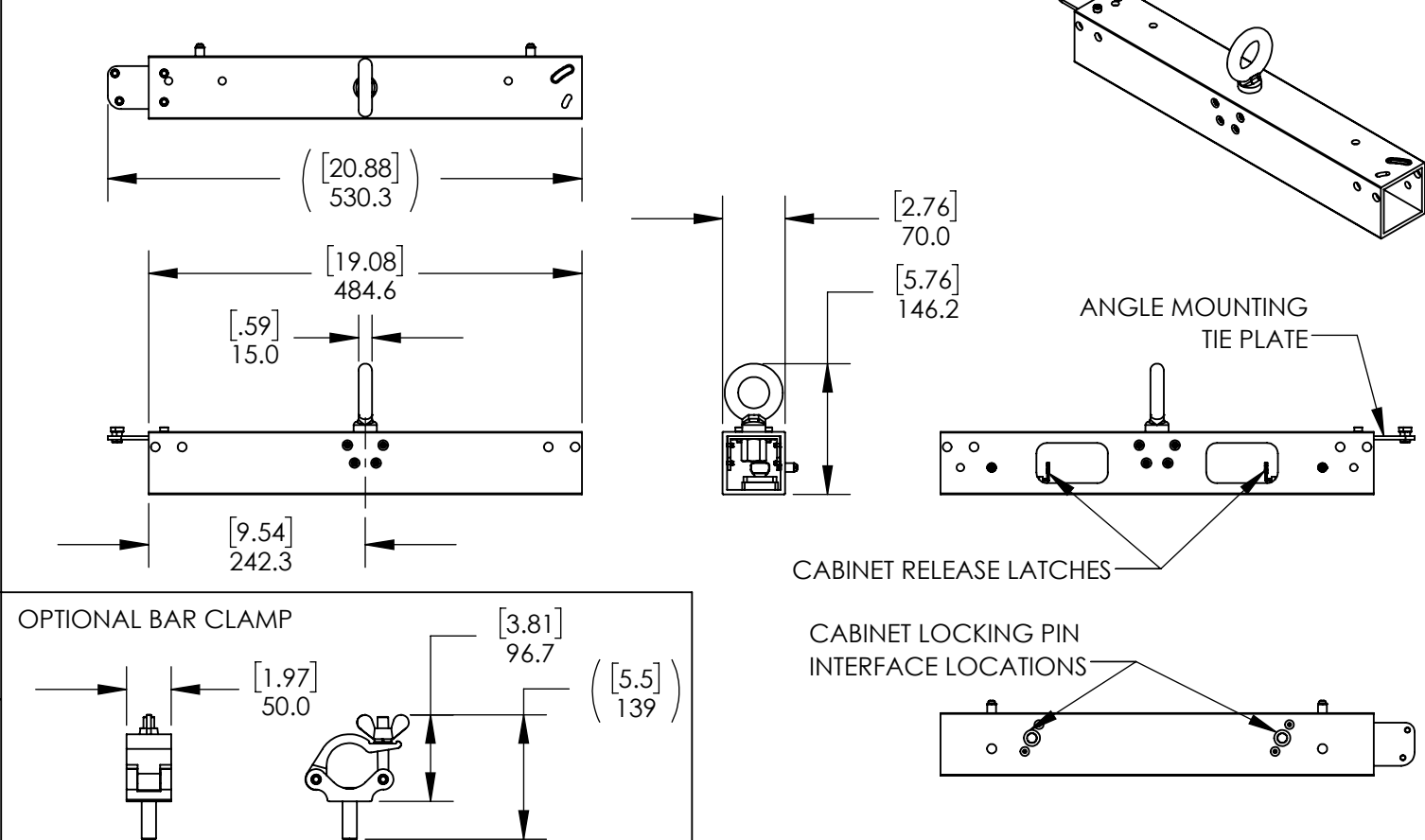
DOUBLE HANGING BRACKET



HANGING BRACKET CONNECTION (FLAT WALL CONFIGURATIONS)



SINGLE HANGING BRACKET



2. 50mm [2in] OD TUBING RECOMMENDED.
1. SPECIFICATIONS SUBJECT TO CHANGE WITHOUT NOTICE
NOTES: UNLESS OTHERWISE SPECIFIED.

PLANAR
PLANAR SYSTEMS, INC.
1195 NE COMPTON DRIVE
HILLSBORO, OR 97006 USA

THIS DRAWING CONTAINS INFORMATION PROPRIETARY TO PLANAR SYSTEMS, INC. ANY REPRODUCTION IN PART OR WHOLE WITHOUT THE WRITTEN PERMISSION OF PLANAR SYSTEMS IS PROHIBITED. THIS DRAWING IS SUPPLIED FOR INFORMATION, IDENTIFICATION, ENGINEERING, EVALUATION, AND/OR INSPECTION PURPOSES ONLY AND MAY NOT BE USED AS BASIS FOR THE MANUFACTURING OF PRODUCTS OR THE FURNISHING OF SERVICES TO PLANAR SYSTEMS OR TO ANY THIRD PARTY UNLESS AUTHORIZED IN WRITING BY PLANAR SYSTEMS.

Planar® Venue™ Pro

PRODUCT

PART NO.

VPI HANGING
BRACKET

SHEET TITLE

UNLESS OTHERWISE SPECIFIED DIMENSIONS ARE IN MILLIMETERS [INCHES].

DRAWN BY
JJG

DRAWN DATE
8 FEB 24

SHEET
13 OF 14

SHEET SIZE
B

REVISION
E

