

4321

D

C

B

A

1. SPECIFICATIONS SUBJECT TO CHANGE WITHOUT NOTICE

NOTES: UNLESS OTHERWISE SPECIFIED.

| Sheet List Table | |
|------------------|---------------------|
| Sheet Number | Sheet Title |
| 1 | COVER PAGE |
| 2 | KEY & INDEX |
| 3 | LPO CABINET |
| 4 | LPO MODULES |
| 5 | LPO HANGING ARRAY |
| 6 | LPO CURVED HANGING |
| 7 | LPO WALL MOUNTING |
| 8 | LPO HANGING BRACKET |
| 9 | LPO LINK BRACKETS |

PLANAR®

PLANAR SYSTEMS, INC.
1195 NE COMPTON DRIVE
HILLSBORO, OR 97006 USA

THIS DRAWING CONTAINS INFORMATION PROPRIETARY TO PLANAR SYSTEMS, INC.. ANY REPRODUCTION IN PART OR WHOLE WITHOUT THE WRITTEN PERMISSION OF PLANAR SYSTEMS IS PROHIBITED. THIS DRAWING IS SUPPLIED FOR INFORMATION, IDENTIFICATION, ENGINEERING, EVALUATION, AND/OR INSPECTION PURPOSES ONLY AND MAY NOT BE USED AS BASIS FOR THE MANUFACTURING OF PRODUCTS OR THE FURNISHING OF SERVICES TO PLANAR SYSTEMS OR TO ANY THIRD PARTY UNLESS AUTHORIZED IN WRITING BY PLANAR SYSTEMS.

PRODUCT

Planar® Luminate™ Pro

SHEET TITLE

KEY & INDEX

UNLESS OTHERWISE SPECIFIED DIMENSIONS ARE IN MILLIMETERS [INCHES].

-

DRAWN BY

JJG

DRAWN DATE

8 FEB 24

SHEET

2 OF 9

SHEET SIZE

B

REVISION

F

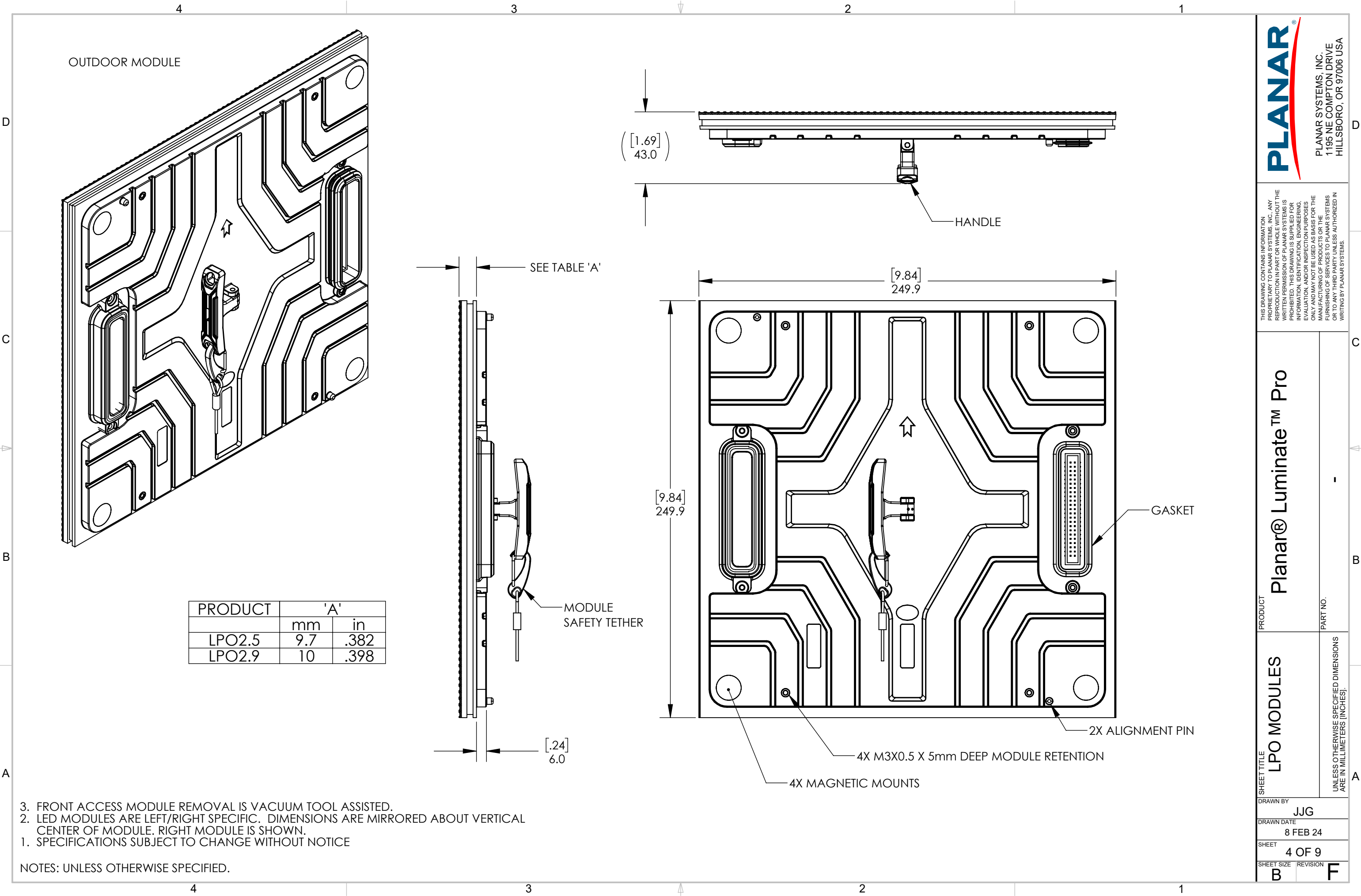
4321

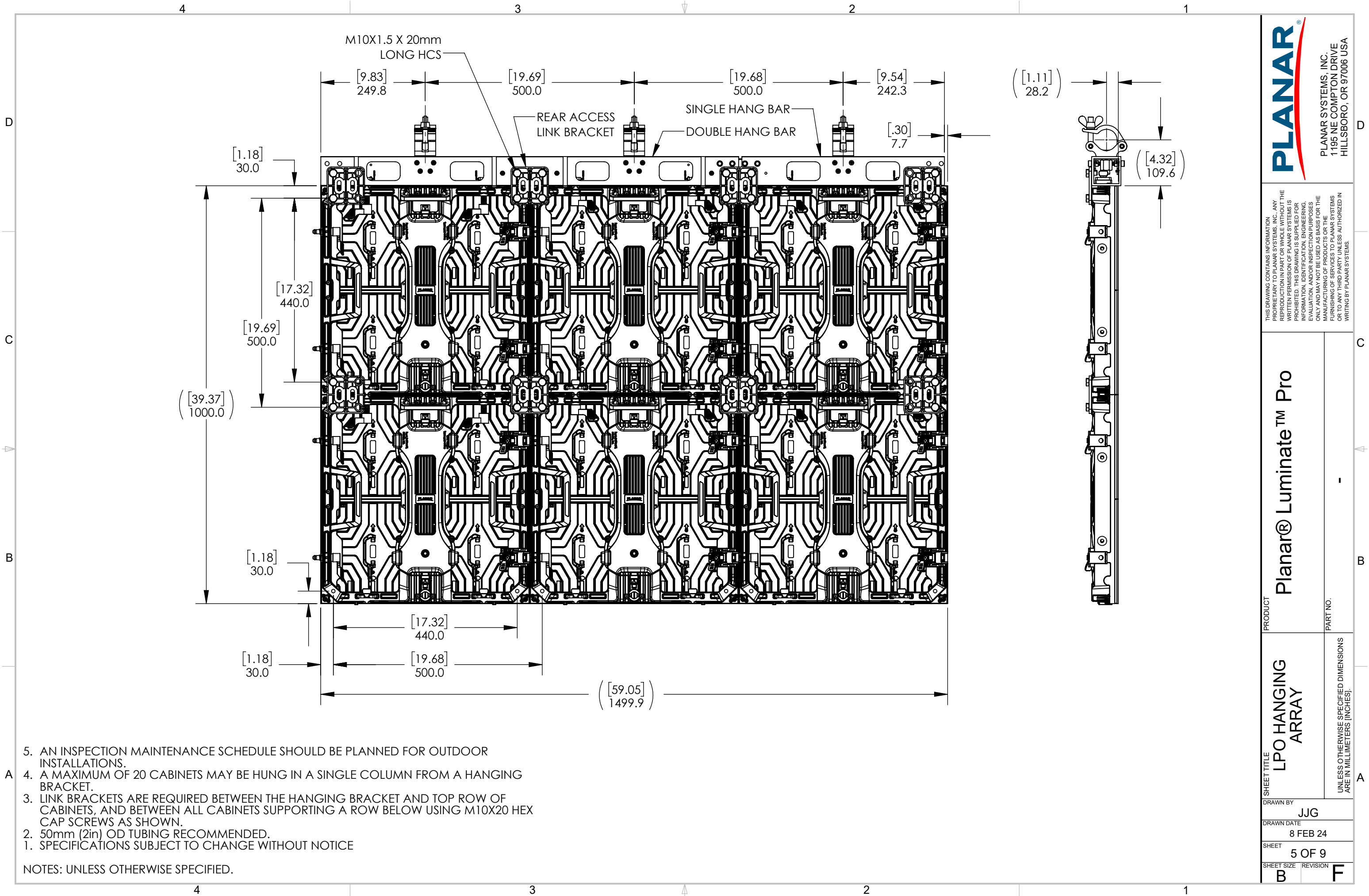
D

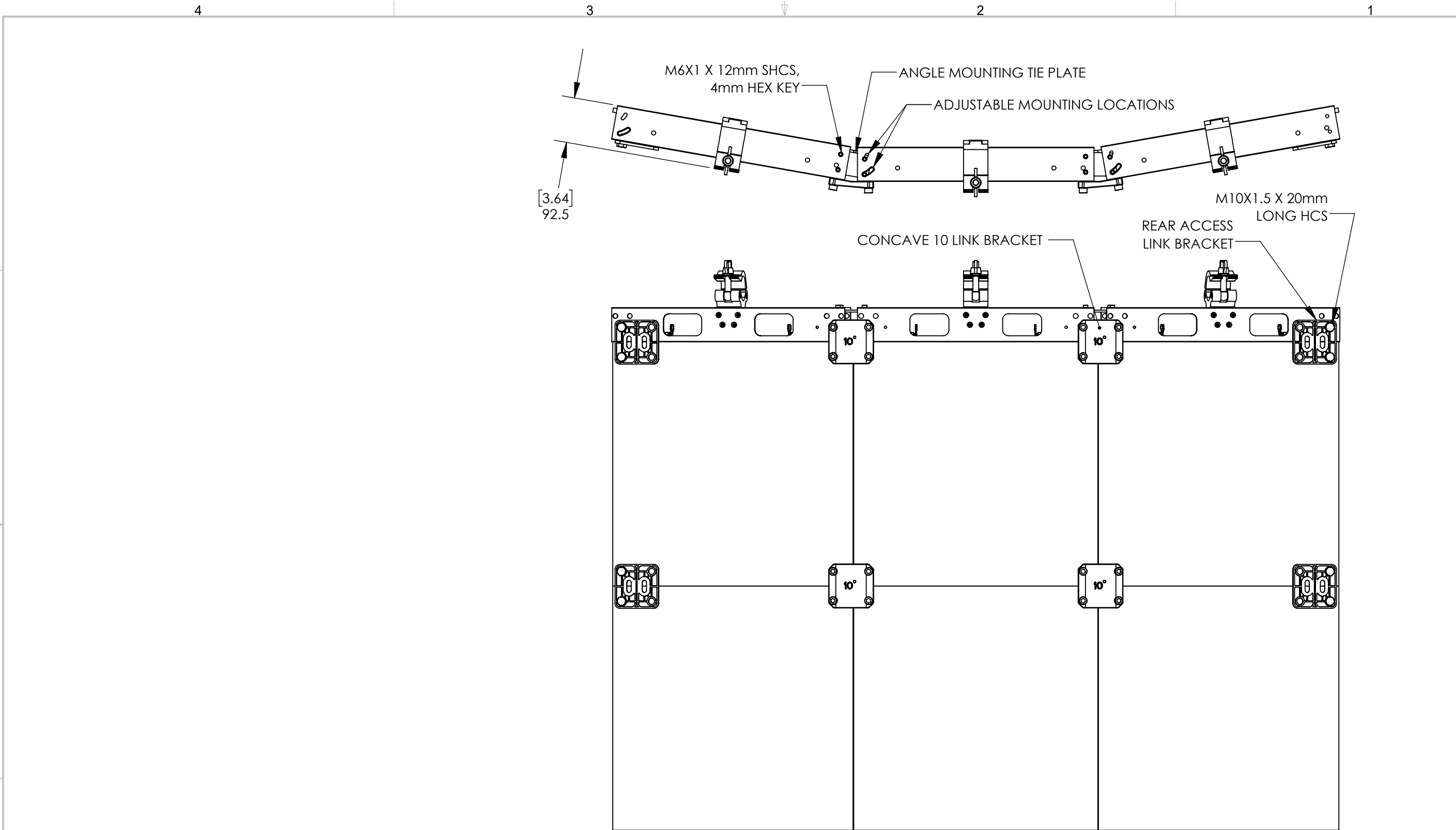
C

B

A







7. AN INSPECTION MAINTENANCE SCHEDULE SHOULD BE PLANNED FOR OUTDOOR INSTALLATIONS.
6. A MAXIMUM OF 20 CABINETS MAY BE HUNG IN A SINGLE COLUMN FROM A HANGING BRACKET.
5. REAR ACCESS IS REQUIRED FOR ALL HANGING BRACKET INSTALLATIONS.
4. LINK BRACKETS ARE REQUIRED BETWEEN THE HANGING BRACKET AND TOP ROW OF CABINETS, AND BETWEEN ALL CABINETS SUPPORTING A ROW BELOW.
3. ANGLE MOUNTING OPTIONS INCLUDE: CONVEX AND CONCAVE IN -10, -7.5, -5, -2.5, 2.5, 5, 7.5, AND 10 DEGREE ANGLES. CONCAVE 10 DEGREE MOUNTING OPTION IS SHOWN.
2. 50mm (2in) OD TUBING RECOMMENDED.
1. SPECIFICATIONS SUBJECT TO CHANGE WITHOUT NOTICE

NOTES: UNLESS OTHERWISE SPECIFIED.

THIS DRAWING CONTAINS INFORMATION PROPRIETARY TO PLANAR SYSTEMS, INC.. ANY REPRODUCTION IN PART OR WHOLE WITHOUT THE WRITTEN PERMISSION OF PLANAR SYSTEMS IS PROHIBITED. THIS DRAWING IS SUPPLIED FOR INFORMATION, IDENTIFICATION, ENGINEERING, EVALUATION, AND/OR INSPECTION PURPOSES ONLY AND MAY NOT BE USED AS BASIS FOR THE MANUFACTURING OF PRODUCTS OR THE FURNISHING OF SERVICES TO PLANAR SYSTEMS OR TO ANY THIRD PARTY UNLESS AUTHORIZED IN WRITING BY PLANAR SYSTEMS.

PRODUCT
Planar® Luminate™ Pro

PART NO.

-

SHEET TITLE
**LPO CURVED
HANGING**

UNLESS OTHERWISE SPECIFIED DIMENSIONS ARE IN MILLIMETERS [INCHES].

DRAWN BY
JJG

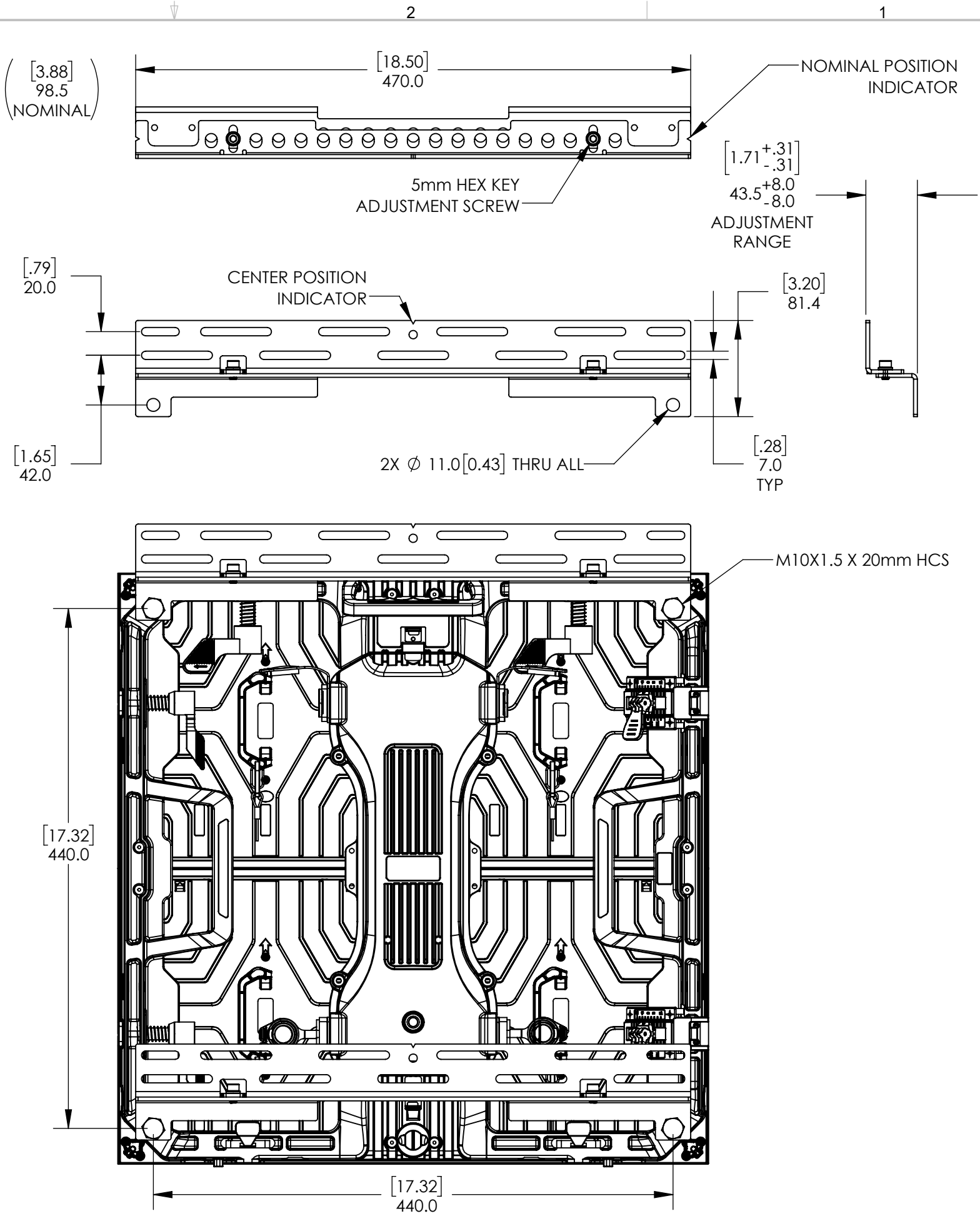
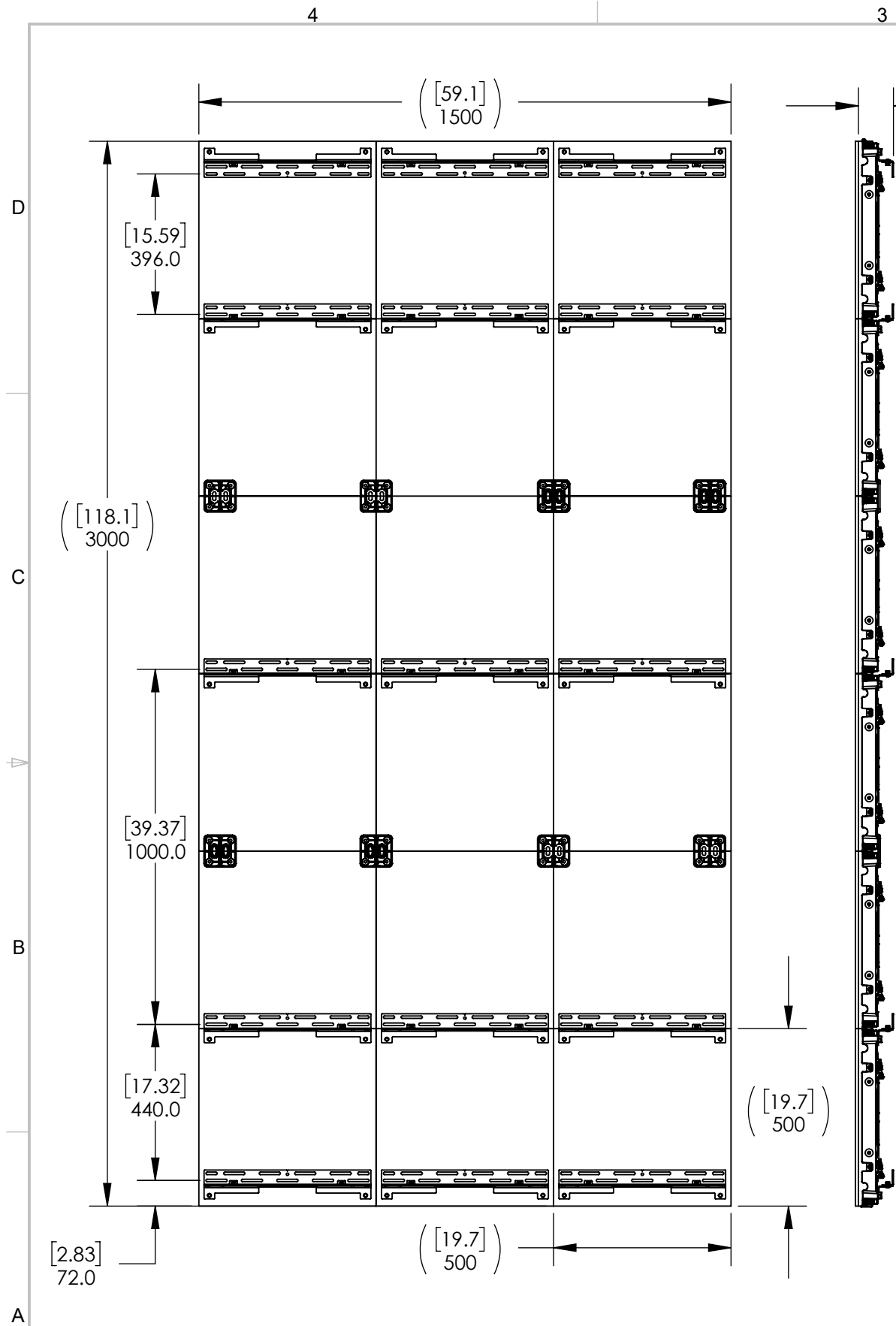
DRAWN DATE
8 FEB 24

SHEET
6 OF 9

SHEET SIZE REVISION

B

F



- LINK BRACKETS REQUIRED ON ROWS WITHOUT WALL MOUNTING BRACKET.
- VARIANCE IN STRUCTURE FLATNESS MAY REQUIRE SHIMS FOR MOUNTING POSITIONS.
- TOP BRACKET IS ROTATED 180 DEGREES TO CONCEAL MOUNT BEHIND CABINET.
- REMOVAL OF MODULES MAY BE REQUIRED FOR ATTACHMENT OF MOUNTS TO STRUCTURE.
- SPECIFICATIONS SUBJECT TO CHANGE WITHOUT NOTICE

NOTES: UNLESS OTHERWISE SPECIFIED.

PLANAR[®]

PLANAR SYSTEMS, INC.
1195 NE COMPTON DRIVE
HILLSBORO, OR 97006 USA

THIS DRAWING CONTAINS INFORMATION PROPRIETARY TO PLANAR SYSTEMS, INC. ANY REPRODUCTION IN PART OR WHOLE WITHOUT THE WRITTEN PERMISSION OF PLANAR SYSTEMS IS PROHIBITED. THIS DRAWING IS SUPPLIED FOR INFORMATION, IDENTIFICATION, ENGINEERING, EVALUATION, AND/OR INSPECTION PURPOSES ONLY AND MAY NOT BE USED AS BASIS FOR THE MANUFACTURING OF PRODUCTS OR THE FURNISHING OF SERVICES TO PLANAR SYSTEMS OR TO ANY THIRD PARTY UNLESS AUTHORIZED IN WRITING BY PLANAR SYSTEMS.

PRODUCT

Planar® Luminate™ Pro

SHEET TITLE

LPO WALL MOUNTING

UNLESS OTHERWISE SPECIFIED DIMENSIONS ARE IN MILLIMETERS [INCHES].

DRAWN BY

JJG

DRAWN DATE

8 FEB 24

SHEET

7 OF 9

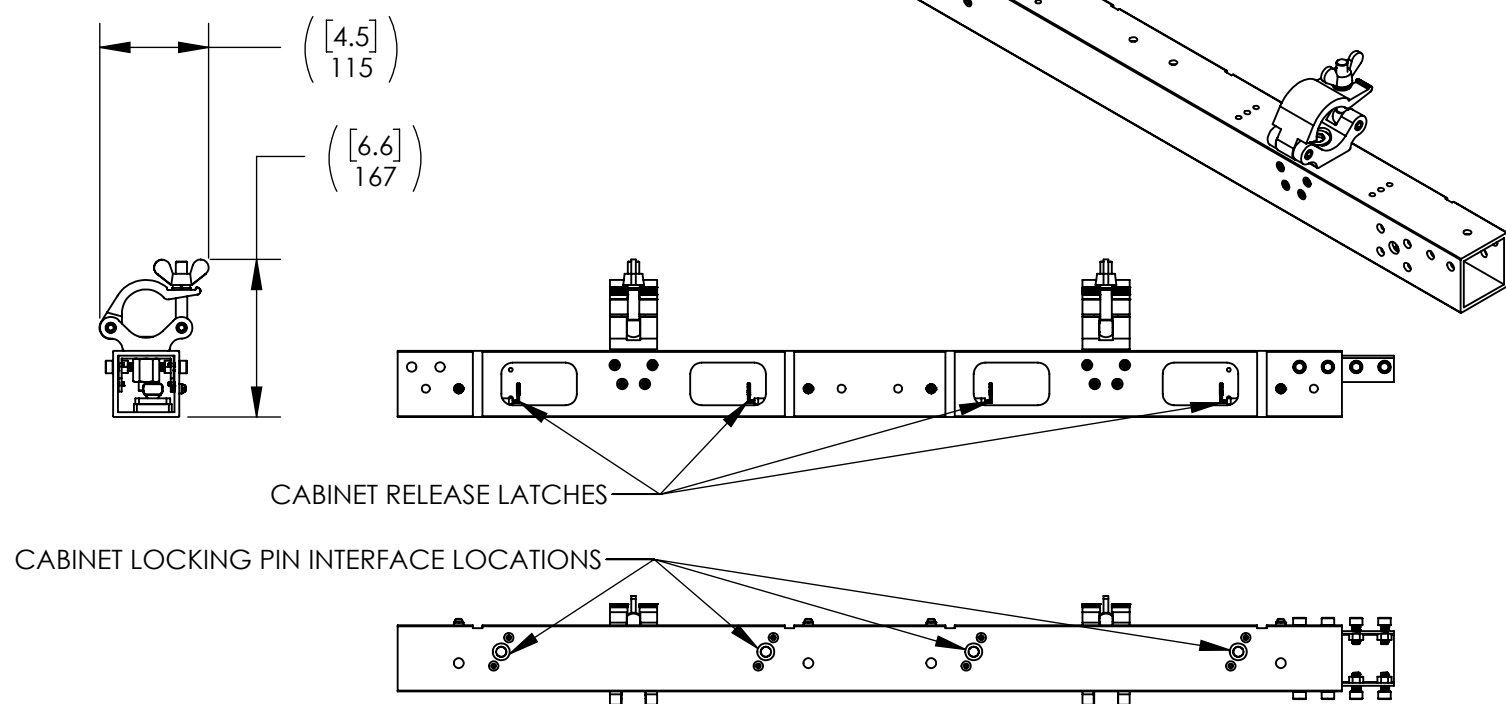
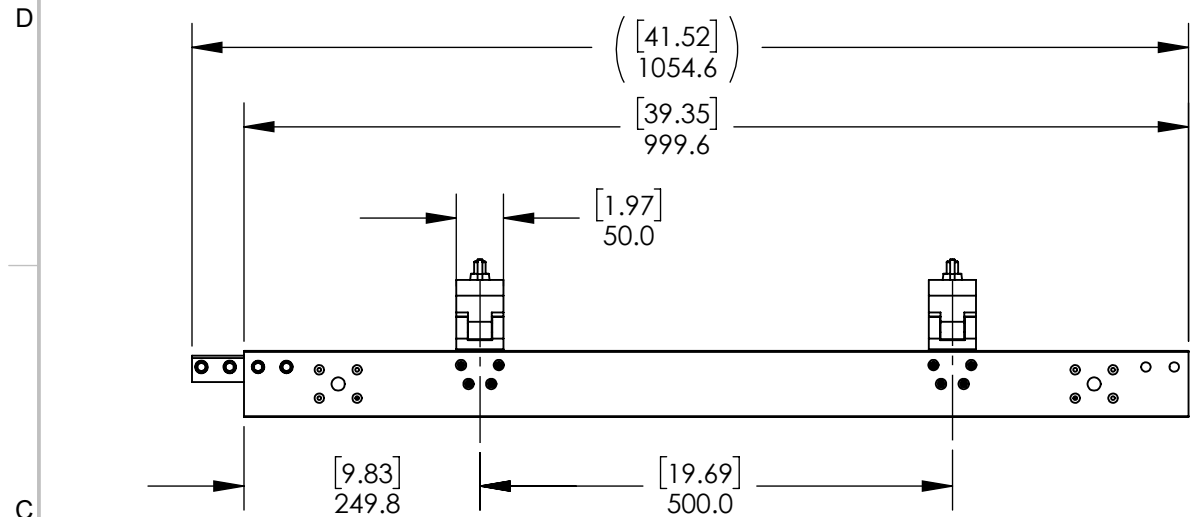
SHEET SIZE

B

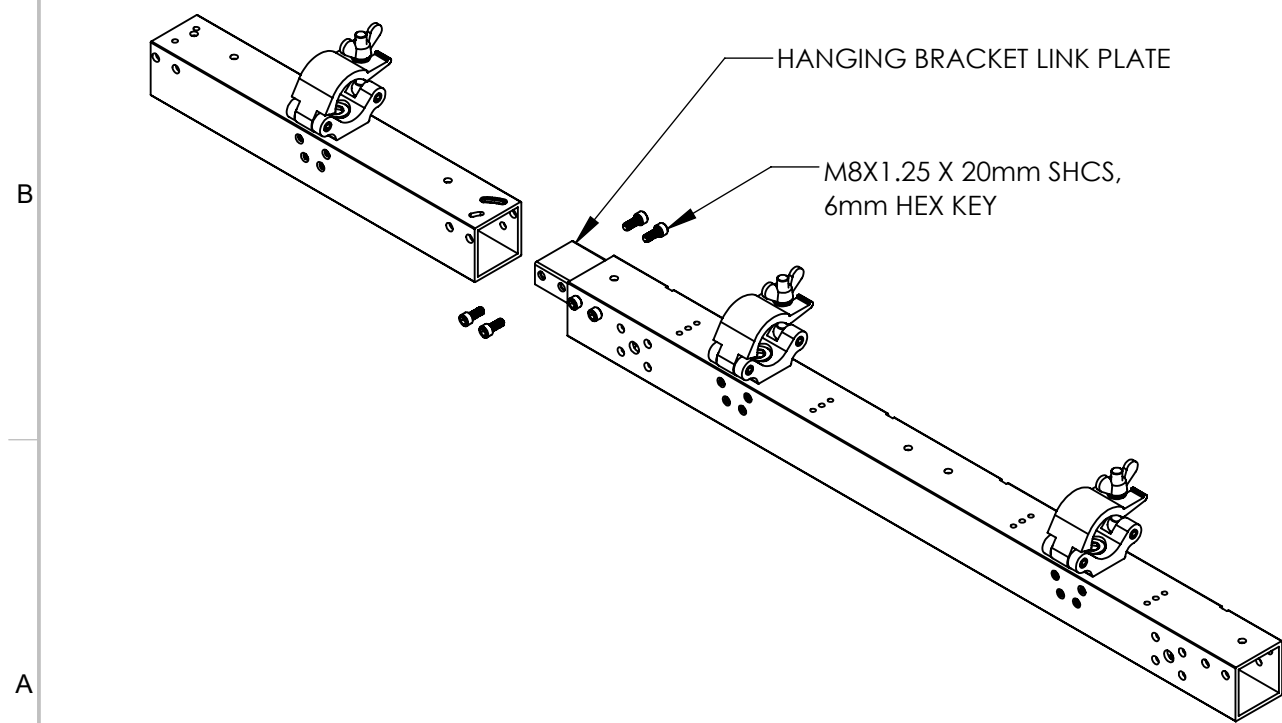
REVISION

F

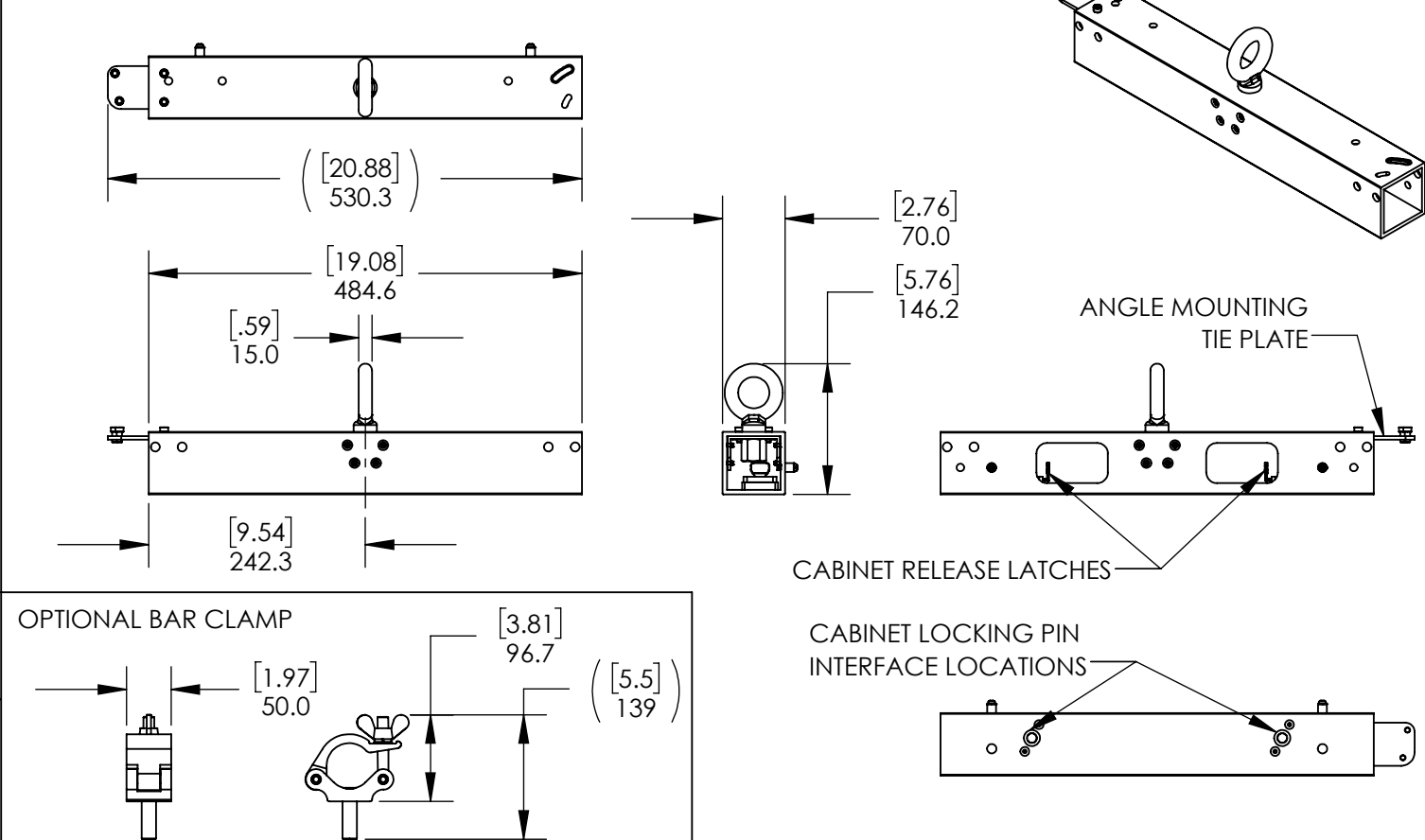
DOUBLE HANGING BRACKET



HANGING BRACKET CONNECTION (FLAT WALL CONFIGURATIONS)



SINGLE HANGING BRACKET



2. 50mm [2in] OD TUBING RECOMMENDED.
1. SPECIFICATIONS SUBJECT TO CHANGE WITHOUT NOTICE

NOTES: UNLESS OTHERWISE SPECIFIED.

PLANAR[®]

PLANAR SYSTEMS, INC.
1195 NE COMPTON DRIVE
HILLSBORO, OR 97006 USA

THIS DRAWING CONTAINS INFORMATION PROPRIETARY TO PLANAR SYSTEMS, INC. ANY REPRODUCTION IN PART OR WHOLE WITHOUT THE WRITTEN PERMISSION OF PLANAR SYSTEMS IS PROHIBITED. THIS DRAWING IS SUPPLIED FOR INFORMATION, IDENTIFICATION, ENGINEERING, EVALUATION, AND/OR INSPECTION PURPOSES ONLY AND MAY NOT BE USED AS BASIS FOR THE MANUFACTURING OF PRODUCTS OR THE FURNISHING OF SERVICES TO PLANAR SYSTEMS OR TO ANY THIRD PARTY UNLESS AUTHORIZED IN WRITING BY PLANAR SYSTEMS.

PRODUCT

Planar® Luminate™ Pro

SHEET TITLE

LPO HANGING BRACKET

DRAWN BY

JJG

DRAWN DATE

8 FEB 24

SHEET

8 OF 9

SHEET SIZE

B

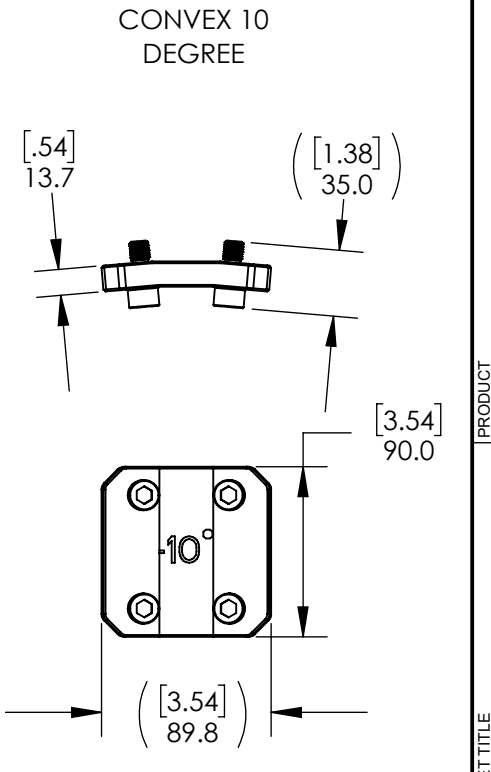
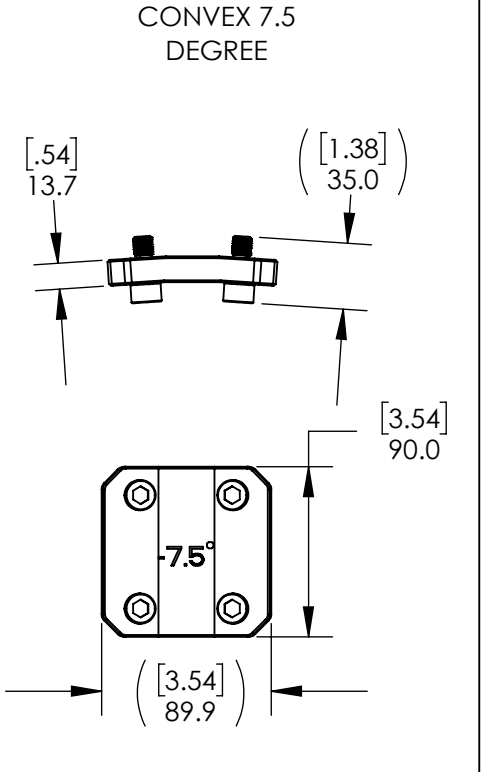
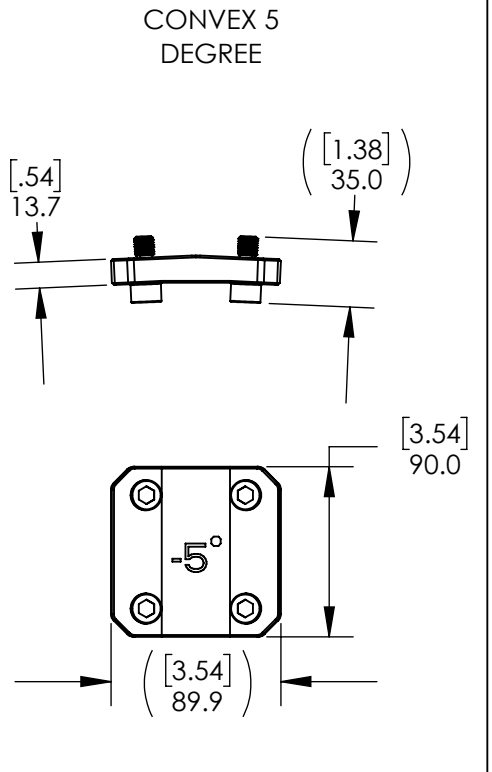
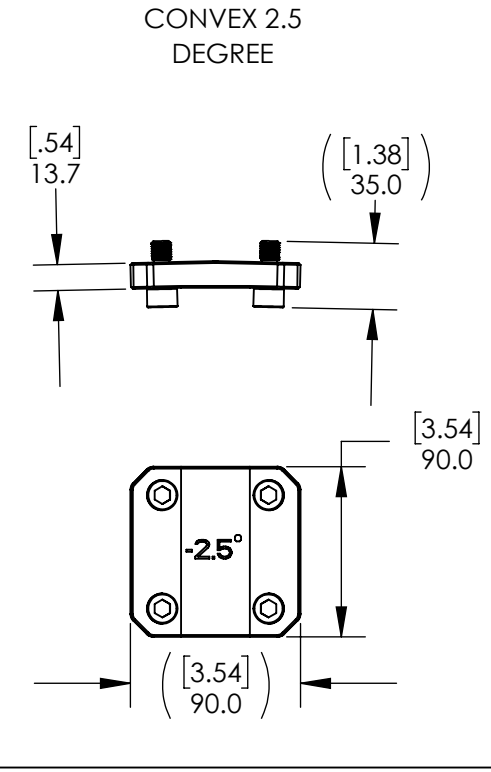
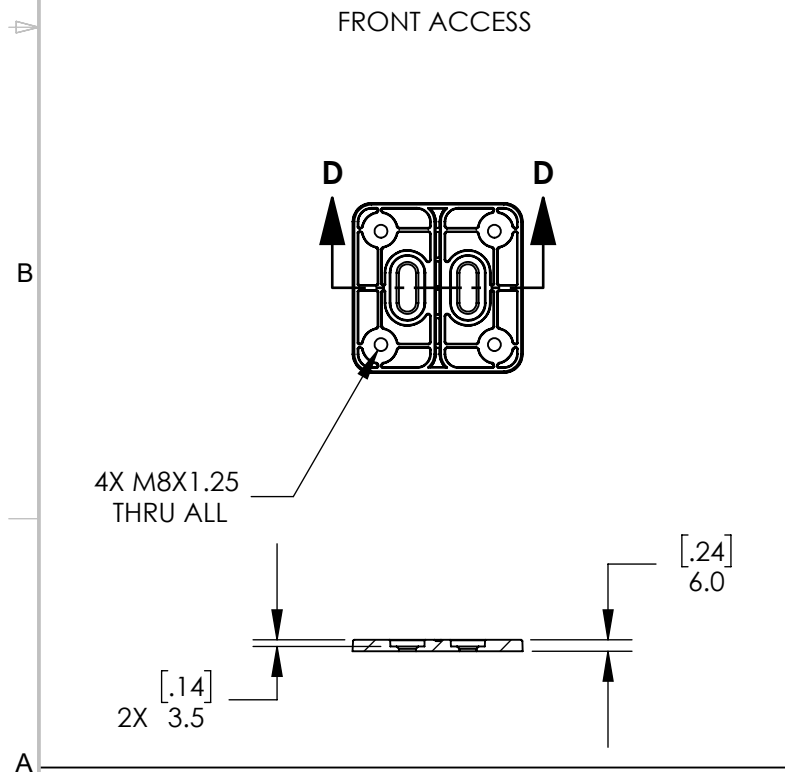
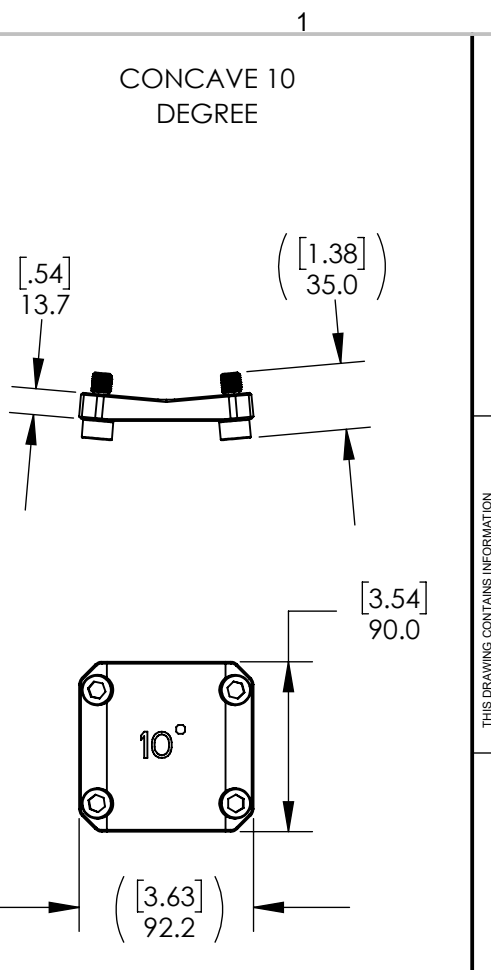
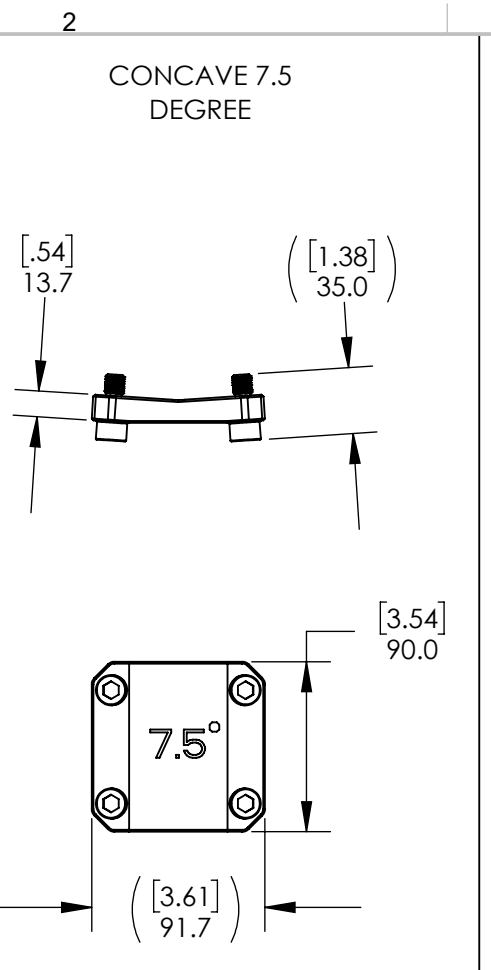
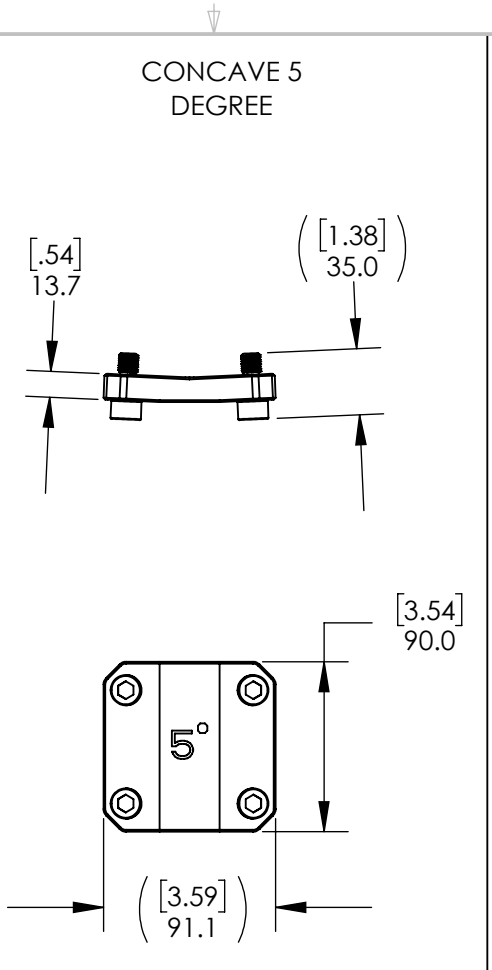
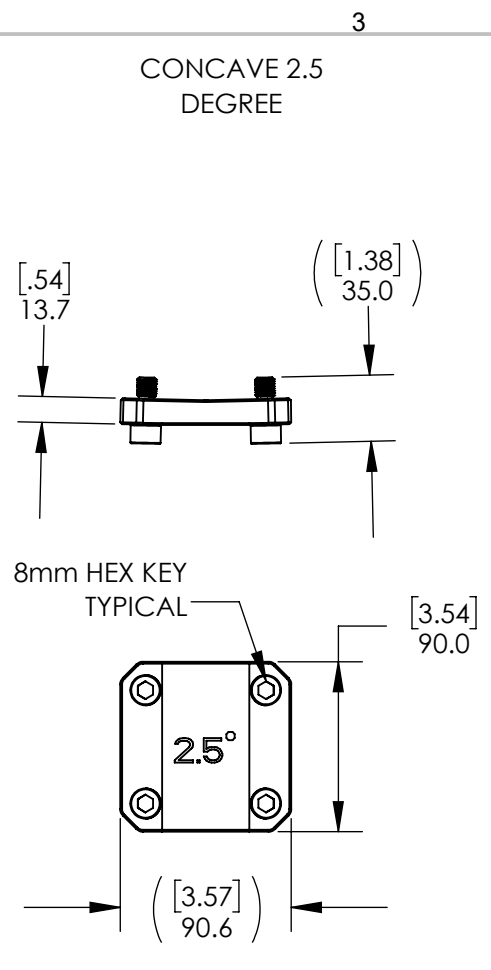
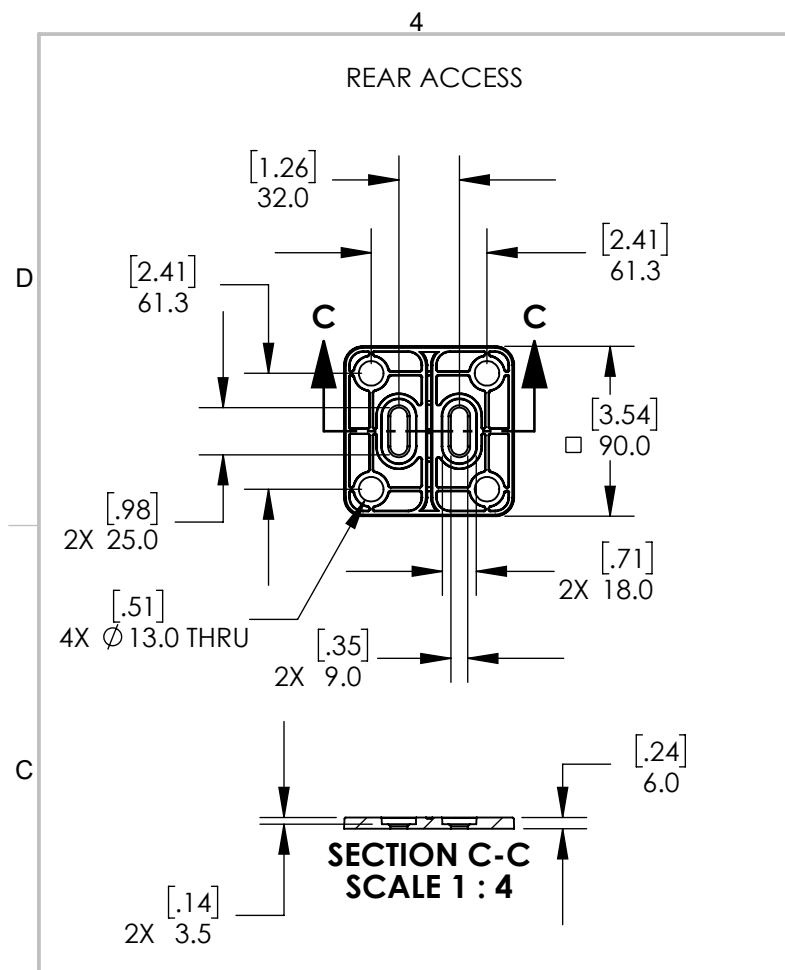
REVISION

F

PART NO.

-

UNLESS OTHERWISE SPECIFIED DIMENSIONS ARE IN MILLIMETERS [INCHES].



3. FRONT ACCESS LINK PLATE HARDWARE M8 X 30mm SHCS; REAR ACCESS M10 X 20mm HCS.
2. ALL CONCAVE AND CONVEX BRACKETS HAVE CAPTIVE M10 SHCS HARDWARE.
1. SPECIFICATIONS SUBJECT TO CHANGE WITHOUT NOTICE

NOTES: UNLESS OTHERWISE SPECIFIED.

PLANAR®

PLANAR SYSTEMS, INC.
1195 NE COMPTON DRIVE
HILLSBORO, OR 97006 USA

THIS DRAWING CONTAINS INFORMATION PROPRIETARY TO PLANAR SYSTEMS, INC. ANY REPRODUCTION IN PART OR WHOLE WITHOUT THE WRITTEN PERMISSION OF PLANAR SYSTEMS IS PROHIBITED. THIS DRAWING IS SUPPLIED FOR INFORMATION, IDENTIFICATION, ENGINEERING, EVALUATION, AND/OR INSPECTION PURPOSES ONLY AND MAY NOT BE USED AS BASIS FOR THE MANUFACTURING OF PRODUCTS OR THE FURNISHING OF SERVICES TO PLANAR SYSTEMS OR TO ANY THIRD PARTY UNLESS AUTHORIZED IN WRITING BY PLANAR SYSTEMS.

Planar® Luminate™ Pro

SHEET TITLE
LPO LINK BRACKETS

| | | |
|------------|----------|----------|
| DRAWN BY | | JJG |
| DRAWN DATE | | 8 FEB 24 |
| SHEET | | 9 OF 9 |
| SHEET SIZE | REVISION | F |
| B | | |

UNLESS OTHERWISE SPECIFIED DIMENSIONS ARE IN MILLIMETERS [INCHES].

1

FE

ES
NI